



CTSEPT13-58



crochet

Designed by Marly Bird

What you will need:

RED HEART® Boutique Unforgettable®: 4 balls of 3955 Winery

Susan Bates® Crochet Hook: 6 mm [J-10 US]

Yarn needle, stitch markers, three 1" (2.5 cm) buttons, sewing needle and matching sewing thread

GAUGE: 15 sts and 12 rows = 4" (10 cm) in half double crochet; 3½ pattern repeats = 4" (10 cm), and 8 rows = 3¾" (9.5 cm) in Shawl pattern. **CHECK YOUR GAUGE.** Use any size hook to obtain the gauge.

Buy Yarn



RED HEART® Boutique Unforgettable®, Art. E793 available in 3.5oz (100 g), 270 yd (247 m) balls



Catskills Cape

Peace, love and a happy-hued yarn are all you need for this boho-inspired cape. You'll love watching the stitch pattern form rows of "little hearts".

Finished Width: 48" (122 cm)
Finished Length: 11½" (29 cm)

Special Stitches

half double crochet 2 stitches together (hdc2tog):

[Yarn over, insert hook in next stitch, yarn over and draw up a loop] twice, yarn over and draw through all 5 loops on hook.

CAPE

Ch 215.

Row 1 (right side): Dc in 6th ch from hook (beginning ch counts as dc, ch 2), *skip next 3 ch, dc in next ch, ch 3, sc in next ch, ch 3, dc in next ch; repeat from * across to last 5 ch, skip next 3 ch, dc in next ch, ch 2, dc in last ch; turn—34 pattern repeats; half repeat at beg and half repeat at end of row.

Row 2: Ch 3 (counts as dc here and throughout), skip next ch-2 sp, (dc, ch 3, sc, ch 3, dc) in next dc, *skip next 2 ch-3 sps, (dc, ch 3, sc, ch 3, dc) in next dc; repeat from * across ending with dc in 3rd ch of turning ch; turn—35 pattern repeats.

Row 3: Ch 5 (counts as dc, ch 2), dc in first dc, *skip next 2 ch-3 sps, (dc, ch 3, sc, ch 3, dc) in next dc; repeat from * across to last 2 ch-3 sps, skip last 2 ch-3 sps, dc in next dc, ch 2, dc in top of turning ch; turn.

Rows 4–15: Repeat Rows 2–3 (6 times).

Row 16: Repeat Row 2. Fasten off.

Edging

With wrong side facing, join yarn with a slip st in corner to work across opposite side of foundation ch.

Round 1 (wrong side): Ch 2 (does not count as a st here and throughout), work 176 hdc evenly spaced across opposite side of foundation ch, work 28 hdc evenly spaced across side edge, place marker in

last hdc made (for corner), work 176 hdc evenly spaced across Row 16 of Cape, place a marker in the 21st, 63rd, 105th, and 147th st of the 176 sts just made (for decrease locations); working across second side edge, hdc in corner, place marker in hdc just made (for corner), work 27 more hdc evenly spaced across side edge; join with slip st in top of beginning ch; turn – 408 hdc.

Note: Work now progresses in rows.

Row 2: Ch 2, hdc in each st to next marked st (corner), 3 hdc in corner st and move marker to center hdc of 3-hdc just made, *hdc in each st to next marked st (decrease location), hdc2tog and move marker to hdc2tog just made; repeat from * 3 more times, hdc in each st to next marked st (corner), 3 hdc in corner st and move marker to center hdc of 3-hdc just made, hdc in next 27 sts (to end of side edge); leave remaining sts (across lower edge) unworked; turn – 232 hdc.

Rows 3–10: Ch 2, hdc in each st to next marked st, 3 hdc in corner st and move marker to center hdc of 3-hdc just made, *hdc in each st to next marked st, hdc2tog and move marker to hdc2tog just made; repeat from * 3 more times, hdc in each st to next marked st, 3 hdc in corner st and move marker to center hdc of 3-hdc just made, hdc in each st across; turn.

Continued...



2015 & 2016
WOMEN'S CHOICE AWARD®
AMERICA'S MOST RECOMMENDED
YARN BRAND



Row 11 (buttonhole row): Ch 2, hdc in each st to next marked st, 3 hdc in corner st and move marker to center hdc of 3-hdc just made, *hdc in each st to next marked st, hdc2tog and move marker to hdc2tog just made; repeat from * 3 more times, hdc in each st to next marked st, 3 hdc in corner st and move marker to center hdc of 3-hdc just made, [hdc in next 3 sts, ch 3, skip next 3 sts] 3 times, hdc in each st across, turn.

Row 12: Ch 2, hdc in each hdc and ch to next marked st, hdc in corner st and remove marker, *hdc in each st to next marked st, hdc2tog and remove marker; repeat from * 3 more times, hdc in each st to next marked st, hdc in corner st and remove marker, hdc in each st to end of row –228 hdc. Fasten off.

FINISHING

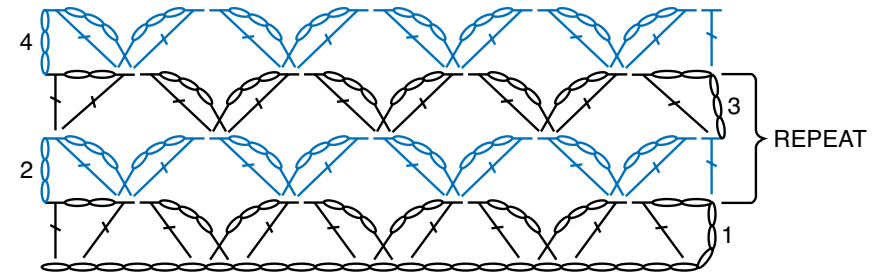
Sew buttons to side edge, opposite buttonholes on other side edge.
Weave in ends.

Fringe

Cut strands of yarn 10" (25.5 cm) long.
*Hold two strands together and fold in half. Insert hook in lower edge of Cape and place fold on hook. Draw fold through edge forming a loop. Thread ends of strands through loop and pull to tighten; repeat from * across lower edge attaching a fringe to every other stitch or end of row. Trim ends to even Fringe.

ABBREVIATIONS

dc = double crochet; **hdc** = half double crochet; **sc** = single crochet; **st(s)** = stitch(es); **()** = work directions in parentheses in same st; **[]** = work directions in brackets the number of times specified; ***** or ****** = repeat whatever follows the * or ** as indicated.



REDUCED SAMPLE OF PATTERN

