



LC4173



EASY

craft

Designed by Laurinda Reddig

What you will need:

Red Heart® Sizzle: 2 spools each 8700 Bright Pink A and 8951 Neon Mix B

Two 2.5mm [1"] buttons, Safety pin or tape, Lighter or heat gun for finishing cord ends (use adult supervision)

Buy Thread

Red Heart® Sizzle™, 100% Nylon Thread, Art. 146 available in 100 yd (91 m) spools



Buttoned Cuff Bracelet

Choose your favorite two shades and make this amazing macramé bracelet. This comfortable fine nylon cord is great to accessorize your look for work, leisure hours and even beach days.

Bracelet measures 7" [18 cm] long x 2" [5 cm] wide excluding ties.

SPECIAL TERMS

knot-bearing cord = the cord around which knots are tied.

knottng cord = cord used to make knots
element = strand(s) or plied cord held together and used as one unit

ply, plies = elements twisted together

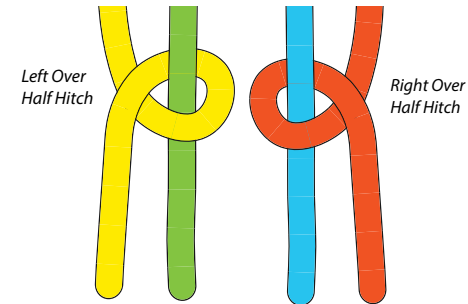
S-twist = elements twisted clockwise

Z-twist = elements twisted counter-clockwise

SPECIAL TECHNIQUES

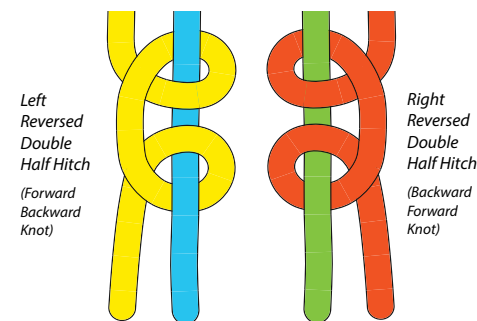
2-ply Z-twist Cord = *Pull first element taut; twist clockwise until overtwisted but not kinked. Secure end to table with tape. Repeat from * for second element. Both elements should have same amount of twist. Hold elements parallel. Twist counter-clockwise to desired level of twist. Secure ends.

Charts = Charts are worked from top to bottom in rows. Top of chart indicates arrangement of colors and strands as you begin. Knots can be worked any direction within a row. When working knots, take knotting cord in direction indicated in chart to leave colors in proper order for next row.



Left Over Half Hitch = tie Left Over Half Hitch once

Right Over Half Hitch = tie Right Over Half Hitch once

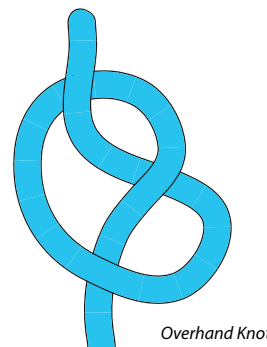


Left Reversed Double Half Hitch = tie Left Over Half Hitch; with same knotting cord, tie Left Under Half Hitch.

Right Reversed Double Half Hitch = tie Right Over Half Hitch; with same knotting cord, tie Right Under Half Hitch.

Both reversed knots are a type of Lark's Head Knot.

Continued...



Overhand Knot

Overhand knot = small knot used to bring strands together



Please Note: Print this pattern using Landscape Orientation.

Find more ideas & inspiration: www.redheart.com

©2014 Coats & Clark

RedHeart.com

Page 1 of 3

Notes

1. Attach bracelet to fabric pillow, pin board or other soft fixed point with a safety pin, OR clip to clipboard OR use tape to attach it to a table.
2. Hold 2 strands of each color as one while working chart.
3. When pairing strands of **B**, make sure both strands do not match colors at same points. Contrast is decreased if both strands are pink at the same place.

BRACELET**Prepare cords**

Cut 28 3½-yard [3 m] lengths in each color and 4 4-yard [3¾ m] lengths of each color. Divide equally into 2 sets, 14 short lengths and 2 long lengths of each color in each set.

Make Loops

With 1 set, hold and line up all strands at one end. Fold, matching ends to ends of short strands; tie temporary overhand knot on side of halfway point with only short strands. Continue working with half the strands, on side with long strands.

Secure knot to fixed point. Arrange short strands in center as knot-bearing cords, 2 long strands of **A** on one side and 2 long strands of **B** opposite as knotting cords.

*With **A**, tie Left Over Double Half Hitch; with **B**, tie Right Over Double Half Hitch. Repeat from * until work measures 2½" [5.5 cm].

Untie temporary knot—1 loop made.

Repeat with second set of strands to make second loop.



Close up of starting loops

Left Loop

Bend loop into shape, bringing 2 sides next to each other; secure each side to fixed point. Holding 2 strands of each color as 1 and beginning at left side of chart, arrange colors for Left Loop. Work first 2 rows on Left Loop side of chart, joining sides of loop on Row 2.

Right Loop

Bend 2nd loop into shape, bringing 2 sides next to each other; secure each side to fixed point. Holding 2 strands of each color as 1 and beginning at right side of chart, arrange colors for Right Loop. Work first 2 rows on Right Loop side of chart, joining sides of loop on Row 2.

Join Loops

Arrange Left and Right loops next to each other and secure. Join with center knot shown on Row 2. Continue, following chart and working across all knots in row to Row 101.

FINISHING

Divide strands into 4 groups of 16 strands each.

For each group, divide into 2 sets of 8 strands each; work 2-ply Z-Twist Cord. Tie overhand knot to secure.

Repeat for other 3 groups.

Trim ends. Melt ends briefly with lighter to prevent fraying.

ABBREVIATIONS

A, B = Color A, B; [] = work directions in brackets the number of times specified; * = repeat whatever follows the * as indicated.

See chart and key on next page



Please Note: Print this pattern using Landscape Orientation.

Find more ideas & inspiration: www.redheart.com

©2014 Coats & Clark

RedHeart.com

Page 2 of 3

Chart 1

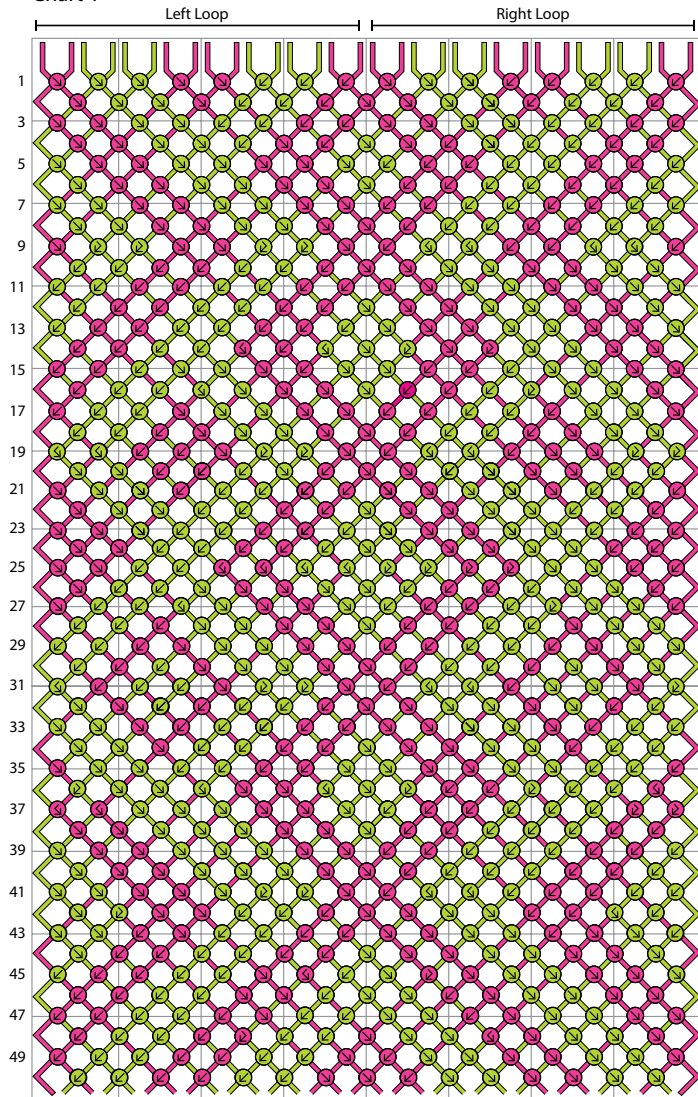


Chart 2

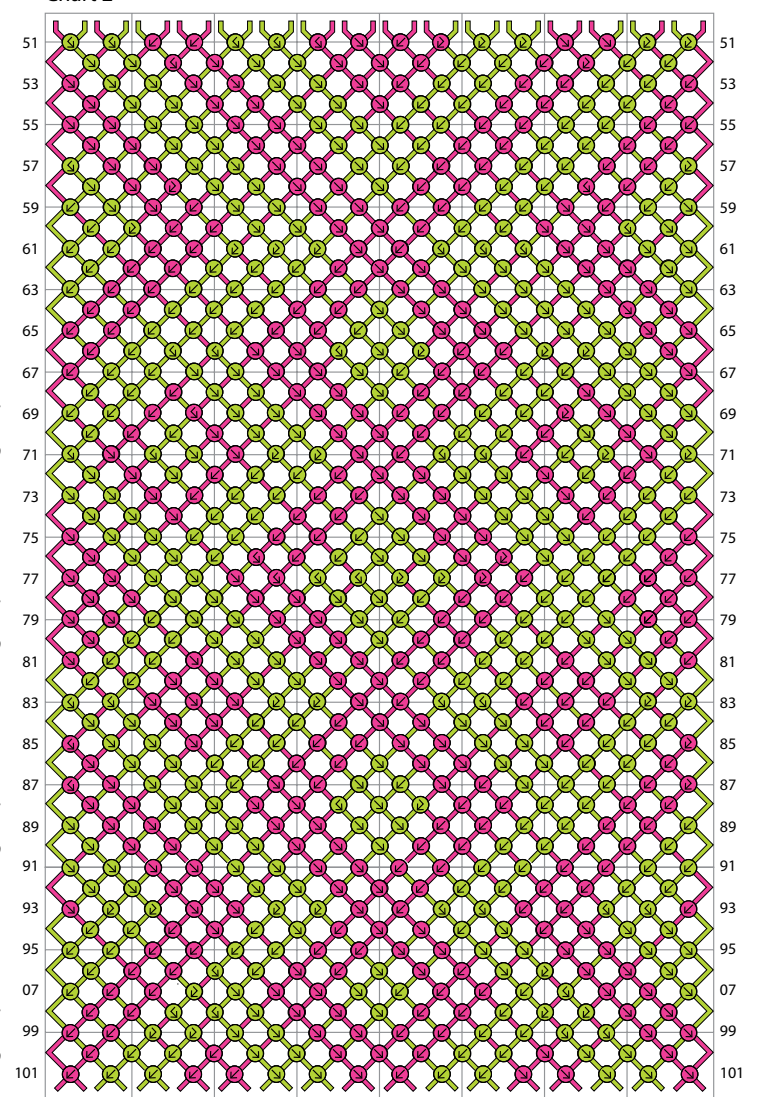


Chart Key

- ⤵ Right Over Double Half Hitch
- ⤴ Left Over Double Half Hitch
- ⤶ Left Reversed Double Half Hitch
- ⤷ Right Reversed Double Half Hitch



Please Note: Print this pattern using Landscape Orientation.

Find more ideas & inspiration: www.redheart.com

©2014 Coats & Clark