



Gauge: 14 sts = 4"; 21 rows = 4" in pattern. **CHECK GAUGE.** Use any size needle to obtain the gauge.

Throw

Cast on 151 sts. Knit 2 rows. Begin pattern:

Row 1 (Right Side): K1, * [yo, slip 1, K1, pss0] twice, K1, [K2tog, yo] twice, K1; repeat from * across.

Row 2: Purl.

Row 3: K2, * yo, slip 1, K1, pss0, yo, slip 1, K2tog, pss0, yo, K2tog, yo **, K3; repeat from * to last 2 sts, end at **; K2.

Row 4: Purl.

Repeat Rows 1-4 for pattern until 44½" from beginning, end by working Row 3. Knit 2 rows. Bind off knitwise. Weave in ends.



RED HEART® "Eco-Ways™", Art. 750 available in 4 oz (113 g), 186 yd (170 m) balls.

ABBREVIATIONS: **K** = knit; **mm** = millimeters; **P** = purl; **pss0** = pass the slipped st over; **st(s)** = stitch (es); **tog** = together; **yo** = yarn over; * or ** = repeat whatever follows the * or ** as indicated; [] = work directions in brackets the number of times specified.

Arrowhead Lace Throw

This beautiful stitch pattern gives you a practical lightweight throw while still being absolutely elegant.

LW2365

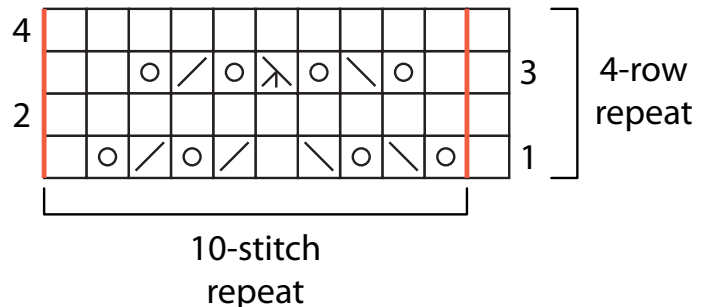


Designed by Grace Alexander.

Throw measures 43" x 45".

RED HEART® "Eco-Ways™": 6 balls 3520 Aquarium.

Circular Knitting Needle: 6mm [US 10] – 29".
Yarn needle.



- k on RS, p on WS
- yarn over
- k2tog
- skp: slip 1, k1, pss0
- sk2p: slip 1, k2tog, pss0



©2010 Coats & Clark
P.O. Box 12229
Greenville, SC 29612-0229

For more ideas & inspiration -

www.redheart.com

www.crochettoday.com www.knittingtodaymag.com