



## Classy Corset Belt

*Add style to your ensemble with this crocheted lace up belt. For a more slimming effect, choose a darker color yarn.*

LW2527



Designed by Double Stitch Twins.

Directions are for size **Small**; changes for sizes **Medium, Large, X-Large, 2X and 3X** are in parentheses.

Corset Belt measures **6"** wide x **20 (23½, 27½, 32, 36, 40)"** long, excluding ribbon lacing.

**RED HEART® "Super Saver®":** (1, 1, 2, 2, 2) skeins each 334 Buff **A**, 330 Linen **B** and 1 skein 320 Cornmeal **C**.

**Crochet Hook:** 5mm [US H-8].

1 yard ribbon-1½" wide, 4 gold metal D rings-1½", stitch markers, yarn needle.

**GAUGE:** 13 sts = 4"; 7 rows = 4" using 1 strand of **A** and **B** held together. **CHECK YOUR GAUGE. Use any size hook to obtain the gauge.**

**NOTE:** 2 strands are held together throughout.

### BELT

#### Center Panel

Holding 1 strand of **A** and **B** held together, ch 21.

**Row 1:** Dc in 3rd ch from hook and in each ch across – 19 dc.

**Row 2:** Ch 3 (counts as dc here and throughout), turn, dc in each dc – 19 dc.

Repeat Row 2 until 18 (20, 22, 26, 28, 32) rows have been worked.

Fasten off.

#### Side Panels (Make 2)

Holding 1 strand of **A** and **B** held together, ch 18 (22, 26, 30, 34, 38).

**Row 1:** Dc in 3rd ch from hook, dc in each ch across, turn – 16 (20, 24, 28, 32, 36) dc.

**Row 2:** Ch 3 (counts as dc here and throughout), turn, dc in each dc – 16 (20, 24, 28, 32, 36) dc.

Repeat Row 2 until 11 rows have been worked.

**Row 12:** Ch 2 (counts as hdc here and throughout), turn, hdc in each dc across.

Fasten off.

### FINISHING

With wrong side facing, position one side edge of one Side Panel along first row of Center Panel. Position side edge of second Side Panel along last row of Center Panel. Whipstitch pieces together.

Holding 2 strands of **C** together, work 3 large cross-stitches over seams on right side.

### Lacing Trim

**Row 1 (Right Side):** With right side facing and 1 strand of **A** and **C** held together, skip 1" along opposite side edge of one Side Panel and join yarn in side edge, ch 3, dc 12 sts



©2011 Coats & Clark  
P.O. Box 12229  
Greenville, SC 29612-0229

For more ideas & inspiration -

[www.redheart.com](http://www.redheart.com)

[www.crochettoday.com](http://www.crochettoday.com) [www.knittingtodaymag.com](http://www.knittingtodaymag.com)

# double stitch twins

evenly spaced along edge, leaving last 1" unworked – 13 dc.

**Row 2:** Ch 3, turn, dc in each dc across.

Fasten off.

Repeat along side edge of opposite Side Panel.

## Edging

**Round 1:** With right side facing and holding 1 strand of **B** and **C** together, join yarn in any st along long edge, ch 1, sc evenly spaced around all edges of Belt, working 2 sc in each corner, to first st, slip st in first st to join.

Position 2 D rings evenly spaced on each Lacing Trim, opposite each other, and using **C**, sew on securely.

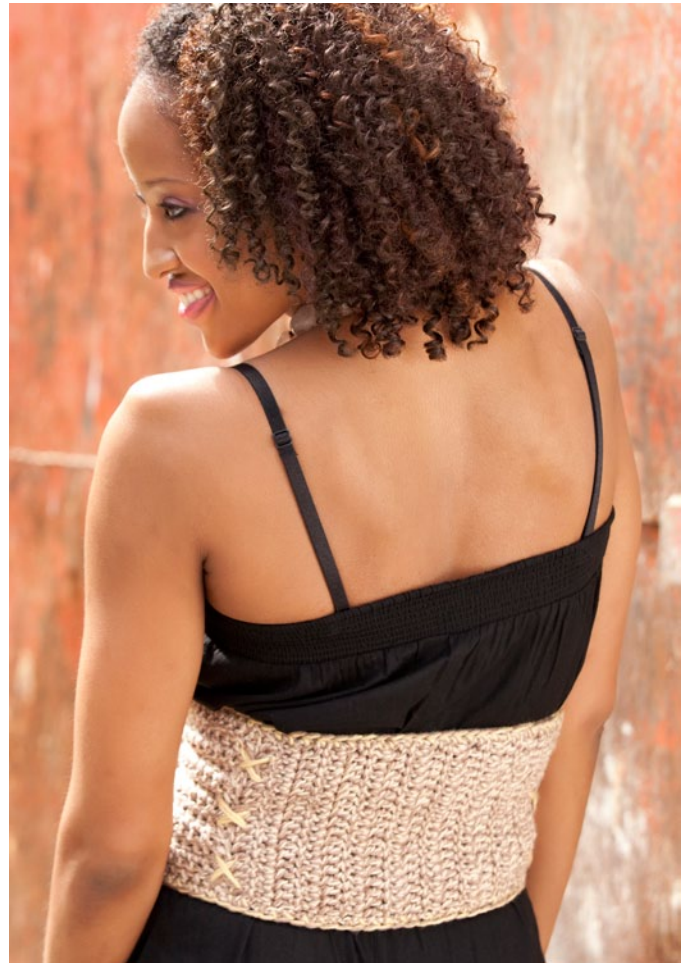
Weave in ends.

Lace ribbon through **D** rings to close Belt and tie ends into a bow.



**RED HEART® "Super Saver®" Art. E300**  
available in solid color 7 oz (198 g),  
364 yd (333 m); multicolor, heather and  
print 5 oz (141 g), 244 yd (223 m), flecks  
5 oz (141g), 260 yds (238 m) skeins.

**ABBREVIATIONS:** **A, B, C** = Color A, B, C; **ch** = chain;  
**dc** = double crochet; **hdc** = half double crochet; **mm** =  
millimeters; **sc** = single crochet; **st(s)** = stitch(es).



©2011 Coats & Clark  
P.O. Box 12229  
Greenville, SC 29612-0229

For more ideas & inspiration -

[www.redheart.com](http://www.redheart.com)

[www.crochettoday.com](http://www.crochettoday.com) [www.knittingtodaymag.com](http://www.knittingtodaymag.com)