



LW3185



crochet

Designed by Katherine Eng.

What you will need:

Red Heart® Classic™: 4 skeins 730 Grenadine A; 2 skeins each 579 Light Lavender B, 513 Parakeet C, 246 Sea Coral D, 111 Eggshell E and 001 White G; 1 skein 681 Mist Green F.

Susan Bates® Crochet Hook: 6.00 mm [US J-10].

GAUGE: 4 sc and 3 ch-1 spaces across = 2" (5 cm); first 3 rows = 1.25" (3.1 cm). CHECK YOUR GAUGE. Use any size hook to obtain gauge.



RED HEART® Classic™, Art. E267 available in solid color 3.5 oz (99 g), 190 yd (174 m) and multicolor 3 oz (85 g), 146 yd (134 m) skeins.



Sherbet Ripple Throw

Every eye will be drawn to this cheerful pairing of bright and cool colors, and the zingy zigzag pattern adds that punch of pizzazz to your room!

Throw measures 44" (111.7 cm) x 54" (137.1 cm).

NOTE

To change color, pull up a loop in first ch-1 space with Right Side facing, ch 1, sc in same space to begin row. Work 7 sc between points and Vs of chevrons. Border is optional.

THROW

With A, ch 215.

Row 1 (Right Side): Working in back loop of ch, sc in second ch from hook; *[ch 1, skip next ch, sc in next ch] 5 times, ch 1, skip next ch, (sc, ch 2, sc) in next ch; [ch 1, skip next ch, sc in next ch] 6 times, **skip 2 ch, sc in next ch; repeat from * across, ending last repeat at **; ch 1, turn – 8 chevron points. →→

Row 2 (Wrong Side): Sc in next ch-1 space. * [ch 1, skip next sc, sc in next ch-1 space] 5 times, ch 1, skip next sc, (sc, ch 2, sc) in next ch-2 space, [ch 1, skip next sc, sc in next ch-1 space] 6 times, **skip next 2 sc, sc in next ch-1 space; repeat from * across, ending last repeat at **, ch 1, turn.

Rows 3-8: Repeat Row 2. Fasten off.

Repeat Row 2, working the following stripe sequence 4 times:

1 row B, 4 rows C, 1 row B, 6 rows D, 1 row E, 4 rows F, 3 rows B, 3 rows G, and 8 rows A. Fasten off.

Border

With B and Right Side facing, draw up a loop in Row 2 at bottom right; working along right side, *ch 2, skip 1 row end, slip st in end of next row end*; repeat from * to * along side to corner, ending with ch 2, skip 1 row end; (slip st, ch 2, slip st) in corner sc; working across top, [ch 2, skip next sc, slip st in next ch-1 space] 6 times, **ch 2, skip next sc, (slip st, ch 2, slip st) in next ch-2 space, [ch 2, skip

next sc, slip st in next ch-1 space] 6 times, ch 2, skip 2 sc, slip st in next ch-1 space, [ch 2, skip next sc, slip st in next ch-1 space] 5 times**; repeat from ** to ** across top to corner; ch 2, (slip st, ch 2, slip st) in corner sc; working along left side, repeat from * to * along side to corner, ending with ch 2, skip 1 row end; (slip st, ch 2, slip st) in corner ch; working across bottom, [ch 2, skip next ch, slip st in next ch-1 space] 6 times, ch 2, skip 2 chs, slip st in next ch-1 space, [ch 2, skip next ch, slip st in next ch-1 space] 5 times, ch 2, skip next ch, (slip st, ch 2, slip st) in next ch-2 space***; repeat from *** to *** across bottom to corner; ch 2, skip next row end, slip st in beginning row end. Fasten off.

ABBREVIATIONS: A, B, C = Color A, Color B, Color C etc; ch = chain; mm = millimeters; sc = single crochet; st(s) = stitch (es); [] = work directions in brackets the number of times specified; * or ** = repeat whatever follows the * or ** as indicated.

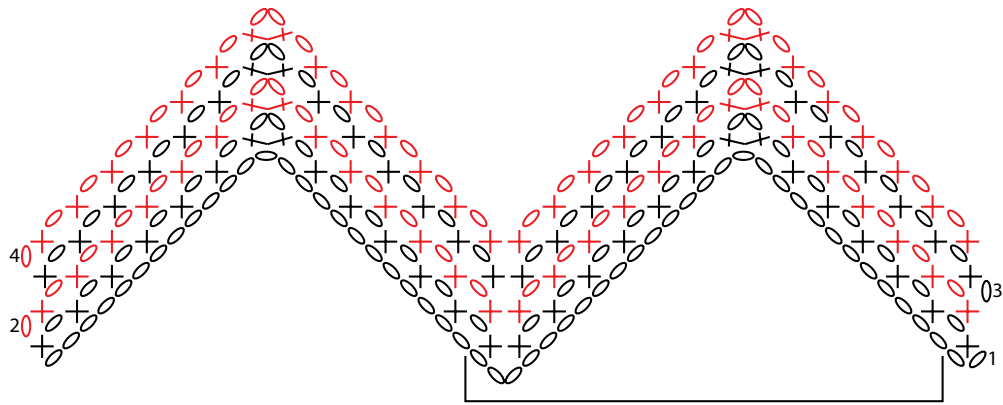
See diagram on next page.



Please Note: Print this pattern using Landscape Orientation.

Find more ideas & inspiration: www.redheart.com and www.crochettoday.com

©2012 Coats & Clark



27-stitch
repeat

KEY	
○	= chain (ch)
×	= single crochet (sc)



Please Note: Print this pattern using Landscape Orientation.

Find more ideas & inspiration: www.redheart.com and www.crochettoday.com