



LW3653



EASY

knitting

Designed by Julie Farmer

What you will need:

RED HEART® Anne Geddes

Baby™: 3 balls each of 100 Lily A; 2 balls each 203 Daffodil B, 504 Robin C, 702 Rosie D, 591 Posy E and 801 Bluebell F

Susan Bates® Knitting Needles:

6.5mm [US 10½] and 4mm [US 6]

Yarn needle

GAUGE: 12 sts = 4" [10cm]; 18 rows = 4" [10cm] in Stockinette stitch using larger needles and 2 strands of yarn held together. **CHECK YOUR GAUGE.** Use any size needles to obtain the gauge given.



RED HEART® Anne Geddes Baby™, Art. E805 available in solid

3.5 oz (100 g) 340 yd (310 m) and multi 3.5 oz (100 g) 290 yd (265 m) balls



Crown Point Ottoman Cover

If you're decorating a room for a precious little one, here's a royal idea! This knit cover is a clever makeover for an inexpensive cube-shape ottoman. Knit it in the colors shown, or your chosen nursery colors.

Ottoman Cover measures 15" x 15 x 15 (38 x 38 x 38 cm)

NOTE

Sides and Top pieces are made holding two strands of yarn together. Points are made using only one strand.

SPECIAL ABBREVIATIONS

M1: Make 1 (Inc) Lift strand between needles to left-hand needle and work strand through the back loop, twisting it to prevent a hole, [knit or purl as indicated by pattern st].

ssk: (1 st dec) Slip next two stitches knitwise to right needle, insert point of left needle through front of sts, knit these sts together through back loop.

OTTOMAN COVER

SIDE 1

With larger needle and with 2 strands of D held together, cast on 46 sts.

Rows 1-5: Knit.

Row 6: Purl.

Row 7: Knit.

Row 8: Repeat Row 6.

Rows 9-16: Change to A, work in St st for 8 rows.

Rows 17-24: Change to C, work in St st for 8 rows.

Rows 25-32: Change to D, work in St st for 8 rows.

Repeat Rows 9-32 until piece measures 15" [38 cm] from beginning.

Bind off.

SIDE 2

Work as for Side 1, beginning with B and working Rows 9-16 with A, Rows 17-24 with F and Rows 25-32 with B.

SIDE 3

Work as for Side 1, beginning with E and working Rows 9-16 with A, Rows 17-24 with B and Rows 25-32 with E.

SIDE 4

Work as for Side 1, beginning with C and working Rows 9-16 with A, Rows 17-24 with E and Rows 25-32 with C.

TOP

Work as for Side 1, beginning with C and working in St st throughout, work Rows 9-16 with A, Rows 17-24 with B and Rows 25-32 with C.

POINTS

Make 12

With smaller needles and using 1 strand of A, cast on 26 sts.

Work in St st for 6 rows, end with a wrong side row.

Row 7 (Right Side): K1, ssk, knit across to last 3 sts, k2tog, k1.

Row 8: Purl.

Repeat last 2 rows until 4 sts remain, end with a wrong side row.

Next Row (Right Side): K1, k2tog, k1 – 3 sts.

Next Row: Purl.

Next Row: K1, M1, knit to end – 4 sts.

Next Row: Purl.

Increase Row: K1, M1, knit to last st, M1, k1 – 6 sts.

Repeat last 2 rows until there are 26 sts.

Work 5 rows in St st.

Bind off.

Continued...



Please Note: Print this pattern using Landscape Orientation.

Find more ideas & inspiration: www.redheart.com and www.crochettoday.com

©2013 Coats & Clark

FINISHING

Fold Points in half and sew sides together. Sew Side pieces together along sides to make a loop. Arrange wide sides of 3 Points along top edge of each Side. Sew Top along top edges of Sides, lining up corners and catching wide edge of Points in seam.

Using C, D, E or F as contrasting color, duplicate st Crown Chart in center of center Point on each side.

Weave in ends.

Abbreviations

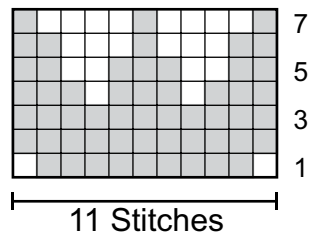
A, B, C = Color A, B, C; **k** = knit; **k2tog** = knit 2 sts together; **mm** = millimeters; **p** = purl; **St** = Stockinette stitch; **st(s)** = stitch(es); **tog** = together.

Stitch Key

☐ = A

■ = Contrasting Color

Crown Chart



Please Note: Print this pattern using Landscape Orientation.

Find more ideas & inspiration: www.redheart.com and www.crochettoday.com