



LW4053



knitting

Designed by Cindy Craig

What you will need:

RED HEART® Boutique Midnight®:
5 balls 1933 Aura

Susan Bates® Knitting Needle:
8mm [US 11]

Susan Bates® Crochet Hook:
6.5mm [US K/10½]

Yarn needle

GAUGE: 14 sts = 4" [10 cm]; 20 rows = 4" [10 cm] in Mitered Square pattern. Mitered Square measures 5" [13 cm] x 5" [13 cm]. **CHECK YOUR GAUGE.** Use any size needle to obtain the gauge.

Buy Yarn



RED HEART® Boutique Midnight®, Art. E786, Available in 2.5 oz (70g), 153 yd (140m) balls



Knit Mitered Shawl

The wonderful shadings of the stunning yarn is shown to full potential in this shawl. As you start to knit each square, you pick up stitches from the previous square so there are no seams. You'll love how nicely the V-shape design looks with the point covering your back.

Shawl measures 15" [38 cm] wide x 50" [127 cm] long

Shawl fits most women

Special Stitch

s2kp = Slip 2 stitches together as if to knit, knit 1, pass the 2 slipped stitches (together) over the knit stitch and off the needle.

Special Technique

Backwards Loop Cast-On Method (Single Cast-On) = Make a slip knot on right-hand needle. Hold needle in your right hand keeping the yarn tail out of the way. Hold the working yarn in your left hand. Pass the working yarn around your thumb from back to front. Slip the needle tip under the loop around your thumb. Pull your thumb out of the loop and tug on the working yarn to tighten up the stitch.

Notes

1. Shawl is made from 51 Mitered Squares. Squares are picked-up and knit from adjoining squares. No seaming is required as garment is worked in one piece.
2. Refer to **Placement Chart** (squares are numbered) showing which Square Pattern to use - Basic Square, Interior Square, Left-Edge Square, Right-Edge Square.

Square Patterns

Basic Square

Using the Backwards Loop Cast-On Method, cast on 31 sts.

Row 1 (Wrong Side): Knit.

Row 2 (Right Side Decrease Row): K14, s2kp, k14—29 sts. Row 3: Purl.

Row 4 (Decrease Row): K13, s2kp, k13—27 sts.

Row 5: Knit. Row 6 (Decrease Row): K12, s2kp, k12—25 sts.

Row 7: Purl.

Row 8 (Decrease Row): K11, s2kp, k11—23 sts.

Row 9: Knit. Row 10 (Decrease Row): K10, s2kp, k10—21 sts.

Row 11: Purl.

Row 12 (Decrease Row): K9, s2kp, k9—19 sts.

Row 13: Knit. Row 14 (Decrease Row): K8, s2kp, k8—17 sts.

Row 15: Purl.

Row 16 (Decrease Row): K7, s2kp, k7—15 sts.

Row 17: Knit.

Row 18 (Decrease Row): K6, s2kp, k6—13 sts.

Row 19: Purl.

Row 20 (Decrease Row): K5, s2kp, k5—11 sts.

Row 21: Knit.

Row 22 (Decrease Row): K4, s2kp, k4—9 sts.

Row 23: Purl.

Row 24 (Decrease Row): K3, s2kp, k3—7 sts.

Row 25: Knit.

Row 26 (Decrease Row): K2, s2kp, k2—5 sts.

Row 27: Purl.

Row 28 (Decrease Row): K1, s2kp, k1—3 sts.

Row 29: Knit.

Row 30 (Decrease Row): S2kp—1 st. Fasten off.

Right-Edge Square

Using Backwards Loop Cast-On Method, cast on 16 sts and pick up and k15 sts along right edge of farthest right edge square—31 sts. Work Rows 1-30 of **Basic Square Pattern**.

Left-Edge Square

Pick up and k15 sts along left edge of the farthest left edge square. Using Backwards Loop Cast-On Method, cast on 16 sts—31 sts. Work rows 1-30 of **Basic Square Pattern**.

Continued...



Please Note: Print this pattern using Landscape Orientation.

Find more ideas & inspiration: www.redheart.com

©2014 Coats & Clark

RedHeart.com

Page 1 of 2

Interior Square

Pick up and k15 sts along left edge of the square that is to the right of the one you are working on. Pick up and k1 st in the center/corner of the square below. Pick-up and k15 sts along the right side of square that is to the left of the square you are working on—31 sts. Work rows 1-30 of **Basic Square Pattern**.

SHAWL

Note: Begin by making one **1. Basic Square** (use **Placement Chart** as a guide). You will build the Shawl from this square and add squares in the following order:

2. Right-Edge Square
3. Left-Edge Square
4. Right-Edge Square
5. Interior Square
6. Left-Edge Square
7. Right-Edge Square
8. Interior Square
9. Interior Square
10. Left-Edge Square
11. Right-Edge Square
12. Interior Square
13. Interior Square
14. Interior Square
15. Left-Edge Square

The center-back point of the Shawl is complete. Continue working in above square pattern for each straight edge of Shawl until all 51 squares have been completed.

BORDER

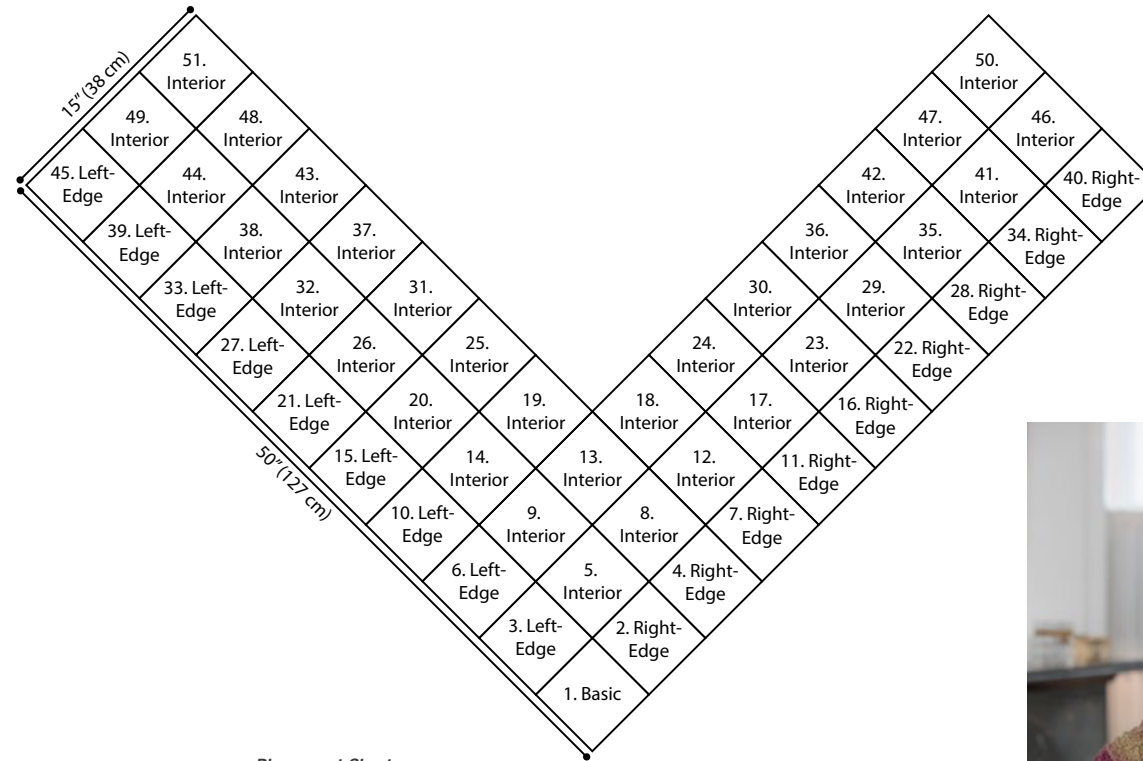
With crochet hook, work 1 row in single crochet along outer edge of entire Shawl. Fasten off.

FINISHING

With yarn needle, weave in ends. Block piece very lightly.

ABBREVIATIONS

k = knit; st(s) = stitch(es).



Placement Chart



Please Note: Print this pattern using Landscape Orientation.

Find more ideas & inspiration: www.redheart.com

©2014 Coats & Clark

RedHeart.com

Page 2 of 2