



LW4144



EASY

knitting

Designed by Nancy J. Thomas

What you will need:

RED HEART® Soft®: 1 ball each
4600 White A, 4604 Navy B, 4608
Wine C

Susan Bates® Knitting Needles:
4.5 mm [US 7]

12" x 16" (30.5 x 40.5 cm) pillow
form, stitch markers, yarn needle

GAUGE: 18 sts = 4" (10 cm); 24
rows = 4" (10 cm) in St st. CHECK
YOUR TENSION/GAUGE. Use any
size needle to obtain the gauge.

Buy Yarn



RED HEART® Soft®,
Art. E728 available in
solid color 5 oz (141 g),
256 yd (234 m), print 4 oz (113 g),
204 yd (187 m), and heather 4oz
(113 g), 212 yd (194 m) balls



Union Jack Pillow

*Knit a throw pillow in the classic style of
the Union Jack using intarsia technique as
you follow the charted design. The back is
worked in simple horizontal stripes.*

After photography we realized the striping on
the photographed pillow is not correct. We
have added an updated chart that will result
in a more accurate replica of the Union Jack
symbol.

**Pillow measures 12" (30.5 cm)x 16"
(40.5 cm [16"]).**

Special Technique

Intarsia = Work chart sts in color specified,
leaving yarns not in use hanging in back until
you work back to that area. Twist yarns around
each other at colour changes to prevent holes.

Notes

1. Chart rows are worked from bottom to top
in same way piece grows. Read sts of odd-
numbered (right side) Chart rows from right
to left, and sts of even-numbered (wrong
side) Chart rows from left to right.
2. Intarsia technique is used throughout to
work colors.
3. Roll separate small balls of colors to work
each area of chart, joining more yarn as
necessary.

PILLOW FRONT

With **A**, cast on 78 sts. Work St st for 4 rows.
Next row (Right Side): K3, place marker, work
Row 1 of Chart, place marker, join second ball
of **A**, k3.

Continue in St st and intarsia, working first
and last 3 sts with **A** and sts between markers
in 72-row Chart pattern.

With **A**, work 3 rows St st; cast off.

PILLOW BACK

With **A**, cast on 78 sts. Work colors in St st as
follows:

- Rows 1-4:** Color A.
- Rows 5-16:** Color B.
- Rows 17-19:** Color A.

- Rows 20-31:** Color B.
 - Rows 32-35:** Color A.
 - Rows 36-45:** Color C.
 - Rows 46-79:** Repeat Rows 1-34.
- Bind off.

FINISHING

Weave in ends. Sew Pillow Front to Back along
3 sides, matching **C** stripes. Insert pillow form;
sew remaining side closed.

ABBREVIATIONS

A, B, C = Color A, B, C; **k** = knit; **p** = purl; **st(s)**
= stitch(es); **St st** = Stockinette Stitch; **[]** =
work directions in brackets the number of
times specified; * = repeat whatever follows
the * as indicated.

See chart on next page



Please Note: Print this pattern using Landscape Orientation.

Find more ideas & inspiration: www.redheart.com

©2014 Coats & Clark

RedHeart.com

Page 1 of 2

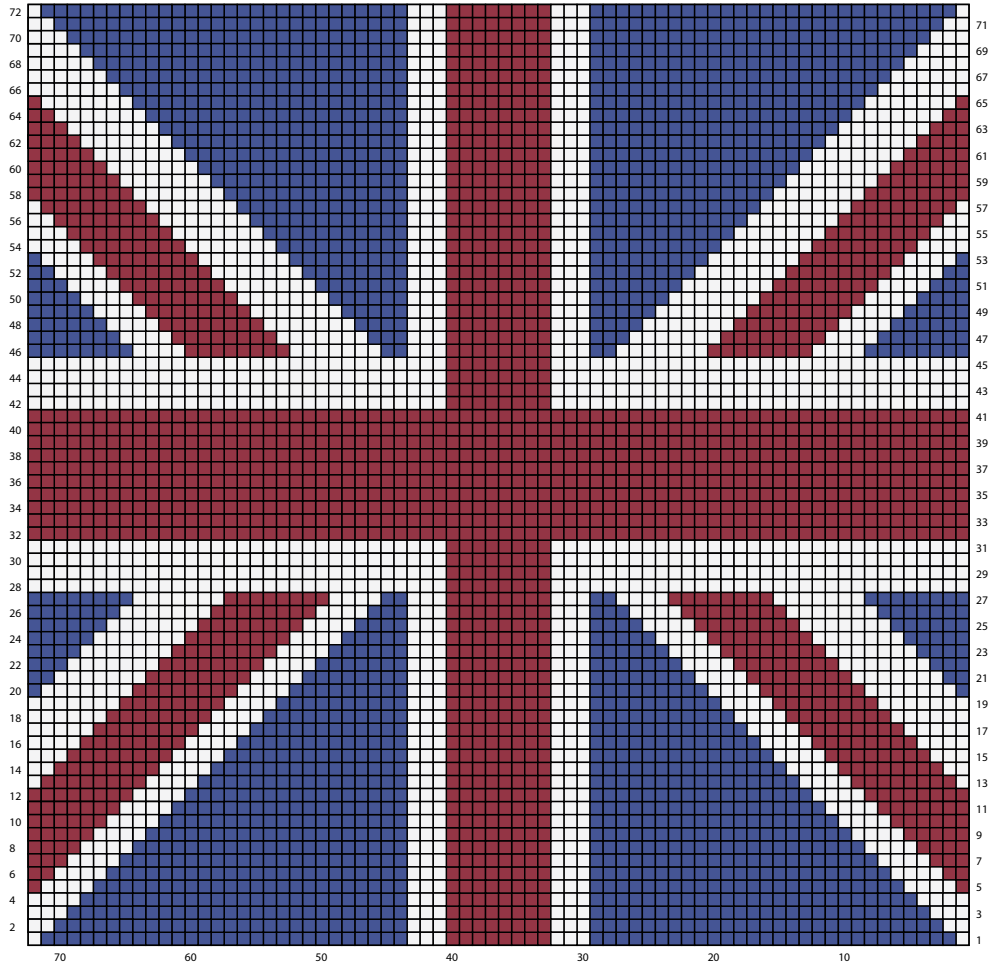


Chart Key

- A
- B
- C



Please Note: Print this pattern using Landscape Orientation.

Find more ideas & inspiration: www.redheart.com

©2014 Coats & Clark