



LW4634A



EASY

crochet

Designed by Edie Eckman

What you will need:

RED HEART® With Love®: 1 skein each 1101 Eggshell A, 1701 Hot Pink B, 1201 Daffodil C

Susan Bates® Crochet Hook: 6.5mm [US K-10½]

Yarn needle

GAUGE: Rounds 1–5 of square = 5" (12.5 cm). CHECK YOUR GAUGE. Use any size hook to obtain the gauge.

Buy Yarn



RED HEART® With Love®, Art. E400 available in solid color

7oz (198g), 370 yd (338m) and multicolor 5oz (141g), 230 yd (211m) skeins



Square A for Bright Eyes Baby Blanket

This is the perfect blanket to crochet while waiting for baby. There are just two fun squares using three colors of this cozy yarn. Follow our crochet along blog by searching LW4634 and you'll find hints and explanations for each square and for finishing this blanket with the perfect border.

Square measures 5½" (14 cm)

Special Techniques

Join with dc = Place a slip knot on hook, yarn over, insert hook in indicated stitch, yarn over and draw up a loop, [yarn over, draw through 2 loops on hook] 2 times.

Join with sc = Place a slip knot on hook, insert hook in indicated stitch, yarn over and draw up a loop, yarn over and draw through both loops on hook.

SQUARE A (make 13)

With A, ch 4; join with slip st in first ch to form a ring.

Round 1 (right side): Ch 3 (counts as first dc here and throughout), 15 dc in ring; join with slip st to top of beginning ch—16 dc. Fasten off.

Round 2: With right side facing, join B with sc in any dc, *ch 1, skip next dc, sc in next dc, ch 3, skip next dc, sc in next dc; repeat from * around omitting last sc; join with slip st in first sc—8 sc, 4 ch-1 spaces, and 4 ch-3 spaces. Fasten off.

Round 3: With right side facing, join C with dc in first ch-1 space, dc in same space, *ch 1, (2 dc, ch 2, 2 dc) in next ch-3 space, ch 1, 2 dc in next ch-1 space; repeat from * around omitting last 2 dc; join with slip st in first dc—twelve 2-dc groups, 8 ch-1 spaces, and 4 ch-2 spaces. Fasten off.

Round 4: With right side facing, join B with sc in last ch-1 space, ch 2, sc in next ch-1 space, ch 2, *3 sc in next ch-2 space (corner made), [ch 2, sc in next ch-1 space] twice, ch 2; repeat from * around ending with 3 sc in last ch-2 space, ch 2; join with slip st in first sc—20 sc and 12 ch-spaces. Fasten off.

Round 5: With right side facing, join A with dc in any ch-2 space, dc in same space, dc evenly around working dc in each sc, 3 dc in center st of each corner (corner made), and 2 dc in each ch-2 space; join with slip st in first dc—52 dc. Fasten off.

Round 6: With right side facing, join B with sc in any dc, sc evenly around working sc in each dc and 3 sc in center st of each corner; join with slip st in first sc—60 sc. Fasten off.

ABBREVIATIONS

A, B, C = Color A, Color B, Color C, etc.;
ch = chain; dc = double crochet; sc = single crochet; st(s) = stitch(es); () = work directions in parentheses into same st; [] = work directions in brackets the number of times specified; * = repeat whatever follows the * as indicated.

See chart on next page



2015
WOMEN'S CHOICE AWARD®
AMERICA'S MOST RECOMMENDED
YARN BRAND



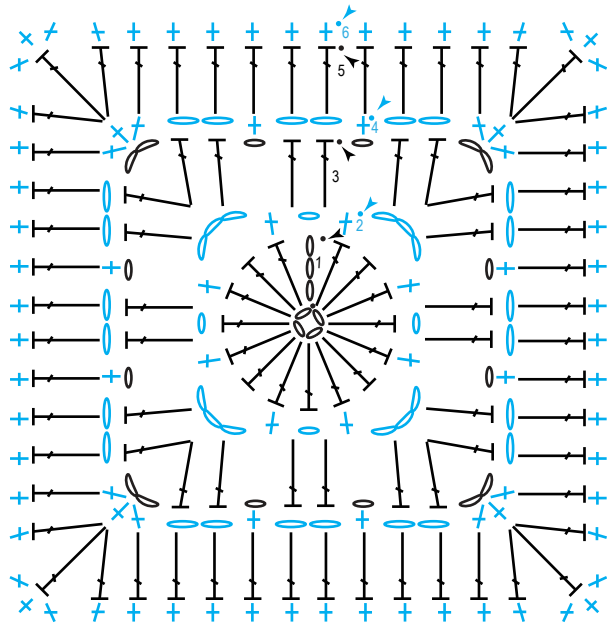
Please Note: Print this pattern using Landscape Orientation.

Find more ideas & inspiration: www.redheart.com

©2014 Coats & Clark

RedHeart.com

Page 1 of 2



Key

- slip st
- o ch
- + sc
- | dc
- ↘ fasten off



Please Note: Print this pattern using Landscape Orientation.

Find more ideas & inspiration: www.redheart.com

©2014 Coats & Clark