



LW4807



EASY

knitting

Design by Kim Kotary adapted by
Christine Chen

What you will need:

RED HEART® Super Saver®:
1 skein of 341 Light Grey

**Susan Bates® Circular Knitting
Needles:** 5 mm [US 8] – 20"

**Susan Bates® Double Pointed
Knitting Needles:** 5 mm [US 8]

Stitch marker, yarn needle

GAUGE: 17 sts = 4" (10 cm), 23
rows = 4" (10 cm) in Stockinette
Stitch. **CHECK YOUR GAUGE.**
Use any size needles to obtain
the gauge.

Buy Yarn



**RED HEART® Super
Saver®, Art. E300**
available in solid color

7 oz (198 g), 364 yd (333 m);
prints, multis and heathers 5 oz
(141 g), 236 yd (215 m), flecks 5 oz
(141g), 260 yds (238 m) skeins



Comfy Cocoon & Cap

*Create a rib knit cocoon with matching hat and
keep a newborn bundle of joy happily warm. It's
the perfect gift for the next baby shower, and the
neutral color suits either gender.*

Finished Sizes

Cocoon: 16" (40.5 cm) circumference x 20"
(51 cm) long, unstretched

Cap: 14" (35.5 cm) circumference x 7"
(18 cm) long, unstretched

Special Stitches

PSSO = Pass Slipped Stitch Over – Insert
the left needle into the front of the slipped
stitch, passing it over the previously worked
stitch and off the needle (1 stitch decrease).

COCOON

With circular knitting needle, cast on 96 sts.
Join, being careful that sts are not twisted,
and begin working in the round. Place
marker for beginning of round.

Round 1 (Right side): (K4, P2) around.
Repeat Round 1 for pattern until piece
measures approximately 19" (48.5 cm) from
cast on edge.

Toe Shaping

Note: Change to double pointed needles
when there are too few sts for the circular
needle.

Round 1 (Right side): *K4, P2tog, K4, P2;
repeat from * around: 88 sts.

Round 2: *K4, K2tog, K3, P2; repeat from *
around: 80 sts.

Round 3: *Slip 1 as if to knit, K1, PSSO, K4,
K2tog, P2; repeat from * around: 64 sts.

Round 4: *Slip 1 as if to knit, K1, PSSO, K2,
K2tog, P2; repeat from * around: 48 sts.

Round 5: *Slip 1 as if to knit, K1, PSSO,
K2tog, P2, K4, P2; repeat from * around:
40 sts.

Round 6: : (K2tog, P2, K4, P2) 3 times, K2tog,
P2, K4, you will be 2 sts before end of round.
Place a new beginning of round marker and
proceed to Round 7. After working the first
2 sts of Round 7, remove the old beginning
of round marker.

Round 7: *P2, P2tog, P1, K4; repeat from *
around: 32 sts.

Round 8: *P1, P2tog, P1, K4; repeat from *
around: 28 sts.

Round 9: (P2tog, P1, K4) around: 24 sts.

Round 10: (P2tog, K4) around: 20 sts.

Round 11: *P1, slip 1 as if to knit, K1, PSSO,
K2tog; repeat from * around: 12 sts.

Cut yarn leaving a 12" (30.5 cm) end. Thread
yarn needle with end and weave through
remaining stitches; draw up firmly; fasten
securely.

CAP

With double pointed knitting needle, cast
on 60 sts. Join, being careful that sts are not
twisted, and begin working in the round.
Place marker for beginning of round.

RIBBING

Round 1 (Right side): (P4, K2) around.
Repeat Round 1 for Ribbing until piece
measures approximately 2" (5 cm) from cast
on edge.

Next Round: Purl around.

Body

Round 1: (K4, P2) around.
Repeat Round 1 for Body until piece
measures approximately 6" (15 cm) from
cast on edge.

Continued...



2015
WOMEN'S CHOICE AWARD®
AMERICA'S MOST RECOMMENDED
YARN BRAND



Please Note: Print this pattern using Landscape Orientation.

Find more ideas & inspiration: redheart.com

©2015 Coats & Clark

RedHeart.com

Page 1 of 2

Crown Shaping

Round 1: *K4, P2, slip 1 as if to knit, K1, PSSO, K2tog, P2; repeat from * around: 50 sts.

Round 2: *K4, P2, P2tog, P2; repeat from * around: 45 sts.

Round 3: *K4, P2, P2tog, P1; repeat from * around: 40 sts.

Round 4: *K4, P1, P2tog, P1; repeat from * around: 35 sts.

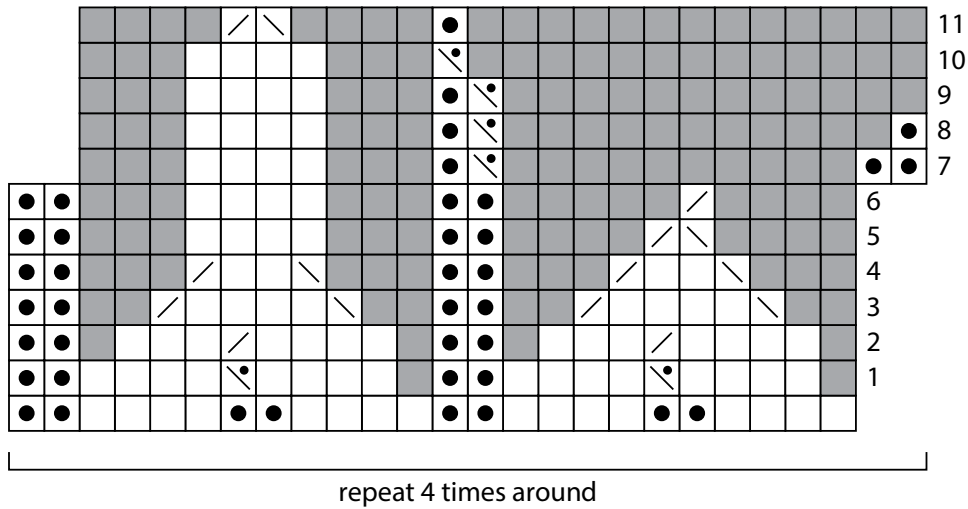
Round 5: (K4, P2tog, P1) around: 30 sts.

Round 6: (K4, P2tog) around: 25 sts.

Round 7: *Slip 1 as if to knit, K1, PSSO, K2tog, P1; repeat from * around: 15 sts. Cut yarn leaving a 12" (30.5 cm) end. Thread yarn needle with end and weave through remaining stitches; draw up firmly; fasten securely.

ABBREVIATIONS

K = knit; **mm** = millimeter; **P** = purl; **st(s)** = stitch(es); **tog** = together; **()** = work instructions in parentheses as indicated; ***** = repeat instructions that follow * as indicated.



Please Note: Print this pattern using Landscape Orientation.

Find more ideas & inspiration: redheart.com