



LW5351



knitting

Designed by Julie Farmer

What you will need:

RED HEART® Soft®: 5 balls 4601 Off White

Susan Bates® Knitting Needles: 9mm [US 13]

Cable needle, yarn needle, stitch markers (4)

GAUGE: 12 sts = 4"; 14 rows = 4" in St st holding 2 strands of yarn tog. **CHECK YOUR GAUGE.** Use any size needles to obtain the gauge given.

Buy Yarn



RED HEART® Soft®, Art. E728 available in solid color 5 oz (141 g),

256 yd (234 m), print 4 oz (113 g), 204 yd (187 m), and heather 4 oz (113 g), 212 yd (194 m) balls



Cabled Ottoman Cover

Purchase an inexpensive ottoman cube and knit this gorgeous aran knit cover for it. It looks great in off white, but would look equally as attractive in whatever accent color you'd like!

Cover fits a 15"x 15"x 15" Ottoman.

Note

Work with 2 strands of yarn held together throughout pattern.

K2, p2 Rib (Multiple of 4 sts)

Row 1: * K2, p2; repeat from * to end of row.

Repeat Row 1 for K2 p2 rib.

OTTOMAN COVER

Side (Make 4)

With 2 strands of yarn held together, cast on 44 sts.

Work in K2, p2 rib for 3", end by working a wrong side row.

Setup Cable Patterns

Next Row (Right Side): K2, place marker, work Row 1 of Chart **A** over next 12 sts, place marker, work Row 1 of Chart **B** over next 16 sts, place marker, work Row 1 of Chart **A** over next 12 sts, place marker k2.

Keeping first and last 2 sts in St st, and sts between markers in cable patterns as established, work until piece measures 15" from beginning, end by working a wrong side row. Bind off.

Top

With 2 strands of yarn held tog, cast on 44 sts.

Purl 1 row. Setup Cable Patterns and work same as for Side, omitting ribbing.

FINISHING

Sew Side pieces together. Sew top to sides.

Abbreviations

K = knit; **mm** = millimeters; **p** = purl; **st(s)** = stitch(es);

St st = Stockinette stitch; **tog** = together;

See next page for chart and alternate photo



2015 & 2016
WOMEN'S CHOICE AWARD®
AMERICA'S MOST RECOMMENDED
YARN BRAND



LW5351 Cabled Ottoman Cover



CHART A

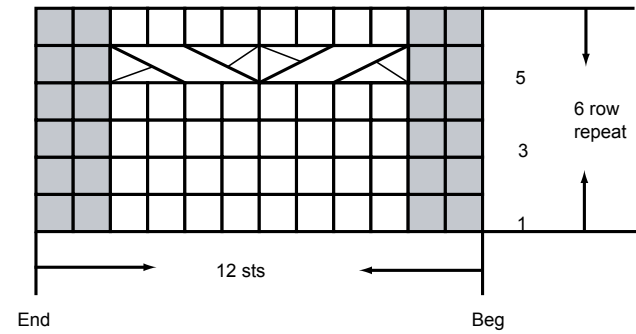
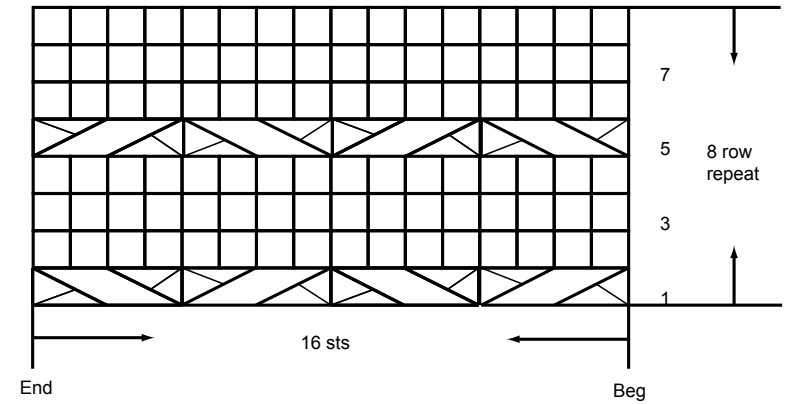





CHART B




STITCH KEY

 K on right side, p on wrong side.

 P on right side, k on wrong side.

 **2/2 RC** = Slip next 2 sts to cable needle, hold to back, k2, k2 from cable needle.

 **2/2 LC** = Slip next 2 sts to cable needle, hold to front, k2, k2 from cable needle.