



LW5641



crochet

Designed by Marianne Forrester

What you will need:

RED HEART® Super Saver Stripes™: 7 skeins 4965 Favorite Stripe

Susan Bates® Crochet Hook: 5mm [US H-8]

Yarn needle

GAUGE: One pattern repeat = 3 1/4" [8 cm]; 5 rows = 4" [10 cm] in pattern stitch. CHECK YOUR GAUGE. Use any size hook to obtain the gauge.

BUY YARN



RED HEART® Super Saver®, Art. E300 available in solid color 7 oz (198 g), 364 yds (333 m); stripes, prints, multis and heathers 5 oz (141 g), 236 yds (215 m); flecks 5 oz (141 g), 260 yds (238 m) skeins



Vibrant Stripes Throw

You'll love how this striped yarn does all the color changing for you! The interesting ripple pattern is ideal for this vibrant yarn shade or any of the Super Saver Stripe color choices.

Throw measures 45" [114 cm] x 55" [140 cm].

SPECIAL ABBREVIATIONS

Dc2tog: [Yarn over, insert hook in next stitch, yarn over and pull up loop, yarn over, draw through 2 loops] 2 times, yarn over, draw through all loops on hook.

Dc3tog: [Yarn over, insert hook in next stitch, yarn over and pull up loop, yarn over, draw through 2 loops] 3 times, yarn over, draw through all loops on hook.

THROW

Ch 157.

Row 1: Dc in fourth ch from hook, [ch 1, skip next ch, dc in next ch, ch 1, skip next ch, 3 dc in next ch, ch 3, 3 dc in next ch, ch 1, skip next ch, dc in next ch, ch 1, skip next ch, dc3tog over next 3 ch] 13 times, ch 1, skip next ch, dc in next ch, ch 1, skip next ch, 3 dc in next ch, ch 3, 3 dc in next ch, ch 1, skip next ch, dc in next ch, ch 1, skip next ch, dc in last 2 ch.

Row 2: Ch 3, turn, skip first dc, dc2tog over next 2 dc, [ch 1, dc in next dc, ch 1, (3 dc, ch 3, 3 dc) all in ch-3 space, ch 1, skip next 2 dc, dc in next dc, ch 1, dc3tog over next dc, previous dc3tog and next dc] 13 times, ch 1, dc in next dc, ch 1, (3 dc, ch 3, 3 dc) all in next ch-3 space, ch 1, skip next 2 dc, dc in next dc, ch 1, dc in next dc, dc in top of beginning ch-3.

Repeat Row 2 until piece measures 55" [140 cm] from beginning. Fasten off.



FINISHING

Weave in ends.

ABBREVIATIONS

ch = chain; cm = centimeters; dc = double crochet; mm = millimeters; st(s) = stitch(es); tog = together; [] = work directions in brackets the number of times specified; () = work directions in parenthesis the number of times specified.

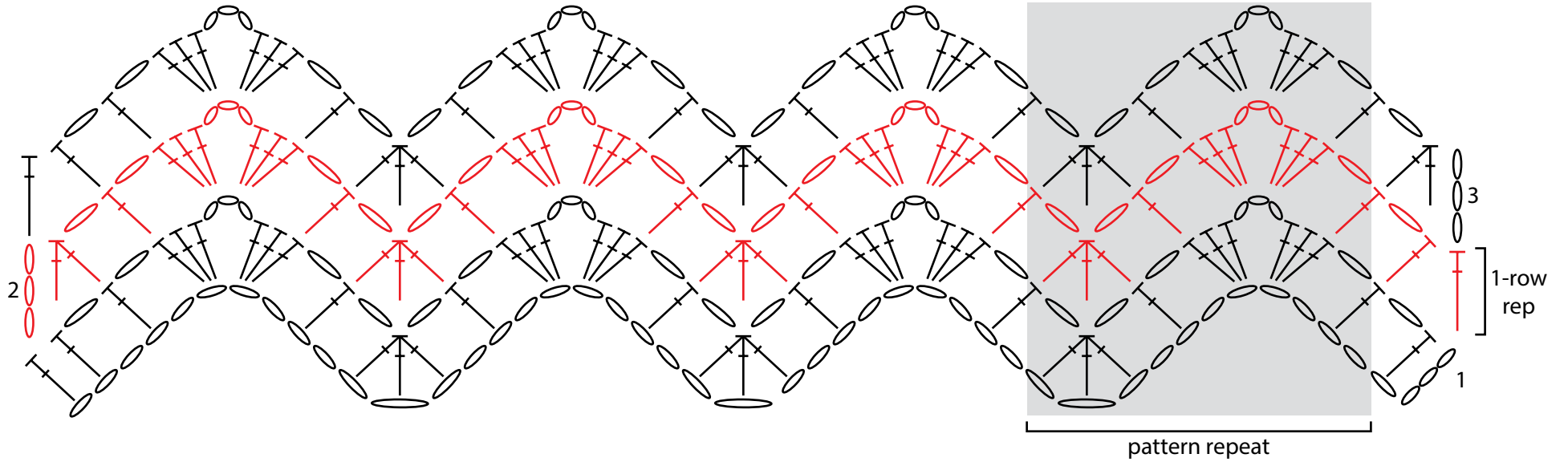
See next page for diagram







2015 - 2017 WOMEN'S CHOICE AWARD AMERICA'S MOST RECOMMENDED YARN BRAND



LW5641 Vibrant Stripes Throw



KEY

-  = chain (ch)
-  = double crochet (dc)
-  = double crochet 2 together (dc2tog)
-  = double crochet 3 together (dc3tog)