



Marly Bird

LW6415



knitting

What you will need:

RED HEART® Soft Essentials™: 2 balls 7420 Charcoal A

RED HEART® Soft Essentials Stripes™: 1 ball 7935 Jungle Stripe B

Susan Bates® Circular Knitting Needles: 6mm [US 10] 36" (91.5 cm)

Susan Bates® split lock stitch markers

Yarn needle

GAUGE: 14 sts = 4" (10 cm) in Fair Isle following color chart. CHECK YOUR GAUGE. Use any size hook to obtain the gauge.

BUY YARN



RED HEART® Soft Essentials™, Art. E856 available in 5 oz (141 g), 131 yd (120 m) balls

BUY YARN



RED HEART® Soft Essentials Stripes™, Art. E857 available in 4 oz (113 g), 110 yd (101 m) balls



Fair Isle Stranded Cowl

This modern Fair Isle look takes advantage of self-striping yarn for the contrast color, so there are few ends to weave in. And the bulky weight yarn means quicker results—so great when you have a gift deadline to meet.

Cowl measures 46" (117 cm) in circumference and 10" (25.5 cm) in height.

COWL

With A, cast on 160 sts. Join round and mark first st, being careful to not twist cast-on edge.

Rounds 1-6: * K1, p1; repeat from * around.

Round 7: Knit.

Round 8: With B, purl.

Round 9: With A, purl.

Round 10: With A, knit.

Place a marker after every 16 sts to make following the color chart easier - 10 markers total.

Work in Stockinette st following color chart for 23 rounds.

Next 11 rounds:

Rounds 1 and 2: With A, knit.

Round 3: With B, purl.

Round 4: With A, purl.

Round 5: With A, knit.

Rounds 6-11: * K1, p1; repeat from * around.

Bind off all sts in rib pattern.

FINISHING

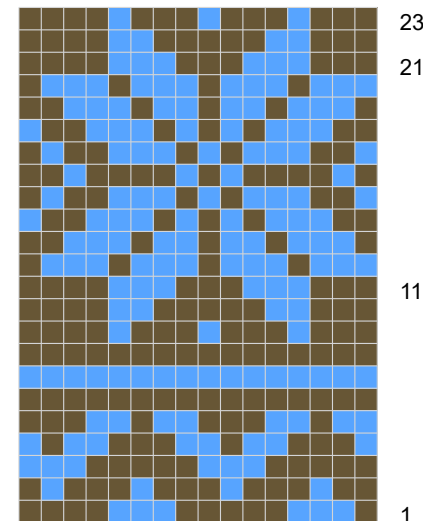
Weave in all loose ends.

ABBREVIATIONS

A, B = Color A, Color B; k = knit; p = purl; st(s) = stitch(es); * or ** = repeat whatever follows the * or ** as indicated.



Color Key:



2015 - 2018 WOMEN'S CHOICE AWARD AMERICA'S MOST RECOMMENDED YARN BRAND