



LM6016



BEGINNER

knitting

Designed by *Kia Love*

What you will need:

RED HEART® Super Saver Ombre™: 1 skein 3970 Spearmint

Susan Bates® Knitting Needles: 5mm [US 8]

Yarn needle

GAUGE: 16 sts = 4" [10 cm];
20 rows = 4" [10cm] in
Lace Pattern. **CHECK YOUR
GAUGE. Use any size needles
to obtain the gauge.**

BUY YARN



RED HEART® Super Saver Ombre™, Art E305

available in print colors 10 oz (283 g), 482 yd (440 m) skeins



Cozy Lace Cowl

This cowl is the perfect size to tuck into your favorite coat. The ombré effect is stunning in the simple lace pattern. Because the skein is so big, you can make more than one, a perfect gift idea!

Cowl measures 20" [51 cm] in circumference x 11" [28 cm] high

Special Abbreviations

K2tog - Knit 2 together: Knit 2 stitches together as if they were a single stitch.

Stretchy Bind-Off = Knit first st. *Knit next st and then slip 2 sts from right-hand needle to left-hand needle and K2tbl (1 st remains on the right-hand needle). Repeat from * across.

SEED STITCH

Row 1: *K1, p1; repeat from * to last st, k1. Rep Row 1 for pattern.

LACE PATTERN

Row 1 (Right Side): *K1, yo, k3, sl 1, k2tog, pssso, k3, yo; repeat from * to last st, k1.

Row 2 (Wrong Side): Purl across. Rep Rows 1 and 2 for pattern.

NOTES

This cowl is worked flat and then sewn together to form a tube. On Wrong Side rows of Lace St, purl all sts, including yarn overs.

COWL

Cast on 81 sts.

Work in Seed st for 10 rows. Beginning with Row 1, work in Lace st until piece measures 9½ [24 cm] from beginning, end with a Row 2. Work in Seed st for 10 rows. Bind off in Seed st.

Bind off all sts using Stretchy Bind-Off.

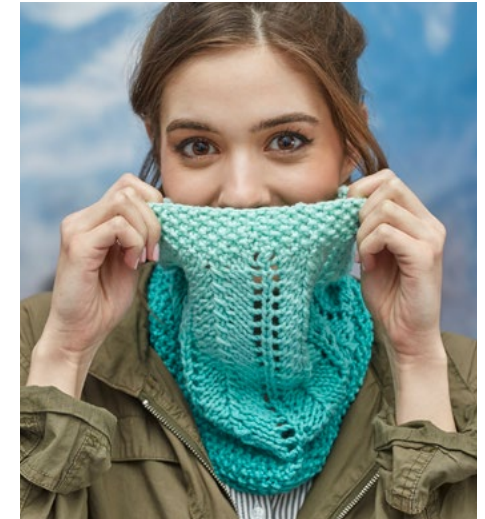
Cut yarn leaving 24" [61 cm] tail. Thread tail through yarn needle and use to sew seam, joining short (side) ends of piece, forming cowl.

FINISHING

Weave in ends. Block as desired.

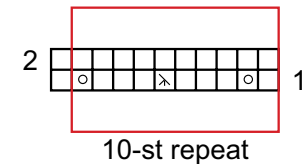
ABBREVIATIONS

cm = centimeters; **k** = knit; **k2tog** = knit 2 sts together; **mm** = millimeters; **pssso** = pass slipped st over; **sl** = slip; **st(s)** = stitch(es); **yo** = yarn over needle; * = repeat whatever follows the * as indicated.



Stitch Key

- = K on Right Side, p on Wrong Side
- = Sl 1, k2tog, pssso
- = Yo



2015 - 2018
WOMEN'S CHOICE AWARD®
AMERICA'S MOST RECOMMENDED
YARN BRAND