



Cabled Pulligan

Creatively designed with both pullover and cardigan features, this cabled fashion is fun to knit and great to wear. This elegant yarn has subtle color changes and a hint of sparkle.

LW2771



Designed by Jodi Snyder.

Directions are for size Small. Changes for sizes Medium, Large, 1X and 2X are in parentheses.

RED HEART® Boutique™ “Midnight™”: 6 (7, 8, 9, 10) balls 1936 Misty.

Knitting Needles: 5.5mm [US 9], and 6mm [US 10]
Circular Knitting Needle: 5.5mm [US 9], 24” or shorter.
Stitch markers, stitch holder, yarn needle.

GAUGE: 16 sts = 4”; 22 rows = 4” in St st (knit on Right Side, purl on Wrong Side) with larger needles; 18 sts = 3¾” in lace cable panel. **CHECK YOUR GAUGE. Use any size needles to obtain the gauge.**

To Fit Bust 34 (38, 42, 46, 50)”
Finished Bust: 36 (40, 44, 48, 52)”
Finished Length: 23½ (24, 25, 25½, 26)”

Special Stitches

M1 = Make 1 (Increase) – Lift strand between needles to left-hand needle and knit strand through the back loop, twisting it to prevent a hole.

skp = slip next stitch knitwise to right needle, knit next stitch, lift slipped stitch over knit stitch and off needle.

ssk = slip next two stitches knitwise to right needle, insert point of left needle through front of stitches, knit these stitches together through back loop.

Pattern Stitches

2 x 2 Rib worked in rounds (multiple of 4 sts)

Round 1: *K2, p2; repeat from * to end of round.
Repeat Round 1 for 2x2 Rib.

Cable Lace Right (over 18 sts)

Row 1 (Right Side): P2, yo, k3, skp, k9, p2.

Row 2 (Wrong Side): K2, p8, p2tog through the back loops (tbl), p3, yo, p1, k2.

Row 3: P2, k2, yo, k3, skp, k7, p2.

Row 4: K2, p6, p2tog tbl, p3, yo, p3, k2.

Row 5: P2, k4, yo, k3, skp, k5, p2.

Row 6: K2, p4, p2tog tbl, p3, yo, p5, k2.

Row 7: P2, k6, yo, k3, skp, k3, p2.

Row 8: K2, p2, p2tog tbl, p3, yo, p7, k2.

Row 9: P2, k8, yo, k3, skp, k1, p2.

Row 10: K2, p2tog tbl, p3, yo, p9, k2.

Repeat Rows 1-10 for Cable Lace Right pattern.

Cable Lace Left (over 18 sts)

Row 1 (Right Side): P2, k9, k2tog, k3, yo, p2.

Row 2 (Wrong Side): K2, p1, yo, p3, p2tog, p8, k2.

Row 3: P2, k7, k2tog, k3, yo, k2, p2.

Row 4: K2, p3, yo, p3, p2tog, p6, k2.

Row 5: P2, k5, k2tog, k3, yo, k4, p2.

Row 6: K2, p5, yo, p3, p2tog, p4, k2.

Row 7: P2, k3, k2tog, k3, yo, k6, p2.

Row 8: K2, p7, yo, p3, p2tog, p2, k2.

For more ideas & inspiration -

www.redheart.com

www.crochettoday.com www.knittingtodaymag.com



©2011 Coats & Clark
P.O. Box 12229
Greenville, SC 29612-0229

Row 9: P2, k1, k2tog, k3, yo, k8, p2.

Row 10: K2, p9, yo, p3, p2tog, k2.

Repeat Rows 1-10 for Cable Lace Left pattern.

Notes

1. Right and left fronts are knit separately then joined just below the armhole.
2. When following charts, read odd-numbered rows from right to left for a Right Side row, and even-numbered rows from left to right for a Wrong Side row.
3. Selvedge stitches are included in the stitch counts, but are not reflected on the schematic.

BACK

With smaller needles, Cast on 74 (82, 90, 98, 106) sts.

Knit 3 rows.

Change to larger needles.

Beginning with a Right Side (knit) row, work even in St st (knit on Right Side, purl on Wrong Side) until piece measures 14½" from beginning, end with a Wrong Side row.

Shape Raglan Armholes

Next Row (Right Side): Bind off 4 (4, 4, 6, 6) sts, knit to end of row—70 (78, 86, 92, 100) sts.

Next Row: Bind off 4 (4, 4, 6, 6) sts, purl to end of row—66 (74, 82, 86, 94) sts.

Decrease Row (Right Side): K2, ssk, knit to last 4 sts, k2tog, k2—64 (72, 80, 84, 92) sts.

Next Row: Purl.

Repeat Decrease Row—62 (70, 78, 82, 90) sts.

Repeat last 2 rows 4 (11, 17, 19, 26) more times—54 (48, 44, 44, 38) sts.

Work even in St st for 3 rows.

Repeat Decrease Row—52 (46, 42, 42, 36) sts.

Repeat last 4 rows 8 (5, 3, 3, 0) more times—36 sts.

Bind off on Right Side.

FRONT

Right Front

With smaller needles, Cast on 50 (54, 58, 62, 66) sts.

Knit 3 rows.

Change to larger needles.

Next Row (Right Side): K16 (18, 20, 22, 24), place marker, work Row 1 of Cable Lace Right pattern over next 18 sts, place marker, knit to end of row.

Next Row: P16 (18, 20, 22, 24), slip marker, work Row 2 of Cable Lace Right pattern over next 18 sts, slip marker, purl to last st, k1 (front edge).

Next Row: Knit to marker, slip marker, work next row of Cable Lace Right pattern over next 18 sts, slip marker, knit to end of row.

Next Row: Purl to marker, slip marker, work next row of Cable Lace Right pattern over next 18 sts, slip marker, purl to last st, k1.

Repeat last 2 rows, working stitches between markers in Cable Lace Right pattern, and one st at front edge in Garter st (knit every row), until piece measures 14¼", end with a Wrong Side row. Place sts on a holder.

Left Front

With smaller needles, Cast on 50 (54, 58, 62, 66) sts.

Knit 3 rows.

Change to larger needles.

Next Row (Right Side): K16 (18, 20, 22, 24), place marker, work Row 1 of Cable Lace Left pattern over next 18 sts, place marker, knit to end of row.

Next Row: K1 (front edge), purl to marker, slip marker, work Row 2 of Cable Lace Left pattern over next 18 sts, slip marker, purl to end of row.

Next Row: Knit to marker, slip marker, work next row of Cable Lace Left pattern over next 18 sts, slip marker, knit to end of row.

Next Row: K1, purl to marker, slip marker, work next row of Cable Lace Left pattern over next 18 sts, slip marker, purl to end of row.

Repeat last 2 rows, working stitches between markers in Cable Lace Left pattern, and one st at front edge in Garter st, until piece measures 14¼", end with a Wrong Side row.

Join Fronts

Next Row (Right Side): Working across left front sts, knit to marker, slip marker, work next row of Cable Lace Left pattern over next 18 sts, slip marker, k15 (17, 19, 21, 23), slip last st to right needle; with Right Side facing, return right front sts to left needle, slip last st of left front back to left needle and knit it together with the first st of right front, knit to marker, slip marker, work next row of Cable Lace Right pattern over next 18 sts, slip marker, knit to end of row—99 (107, 115, 123, 131) sts.

Decrease Row: P1 (5, 9, 1, 5), [p2tog, p2 (2, 2, 3, 3)] 24 times, p2tog, p0 (4, 8, 0, 4), removing markers as you come to them—74 (82, 90, 98, 106) sts.

Shape Raglan Armholes

Next Row (Right Side): Bind off 4 (4, 4, 6, 6) sts, knit to end of row—70 (78, 86, 92, 100) sts.

Next Row: Bind off 4 (4, 4, 6, 6) sts, purl to end of row—66 (74, 82, 86, 94) sts.

Decrease Row (Right Side): K2, ssk, knit to last 4 sts, k2tog, k2—64 (72, 80, 84, 92) sts.

Next Row: Purl.

Repeat Decrease Row—62 (70, 78, 82, 90) sts.



Repeat last 2 rows 4 (11, 17, 19, 26) more times—54 (48, 44, 44, 38) sts.
Work even in St st for 3 rows.
Repeat Decrease Row—52 (46, 42, 42, 36) sts.
Repeat last 4 rows 8 (5, 3, 3, 0) more times—36 sts.
Bind off on Right Side.

SLEEVES (make 2)

With smaller needles, Cast on 38 (40, 42, 46, 48) sts.
Knit 3 rows.
Change to larger needles.
Beginning with a Right Side row, work even in St st for 8 rows.
Increase Row (Right Side): K2, M1, knit to last 2 sts, M1, k2—40 (42, 44, 48, 50) sts.
Repeat last 8 rows 9 more times—58 (60, 62, 66, 68) sts.
Work even in St st for 9 rows.
Repeat Increase Row—60 (62, 64, 68, 70) sts.
Repeat last 10 rows once more—62 (64, 66, 70, 72) sts.
Work even in St st until piece measures 20" from beginning, end with a Wrong Side row.

Shape Raglan Armholes

Next Row (Right Side): Bind off 4 (4, 4, 6, 6) sts, knit to end of row—58 (60, 62, 64, 66) sts.
Next Row: Bind off 4 (4, 4, 6, 6) sts, purl to end of row—54 (56, 58, 58, 60) sts.
Decrease Row (Right Side): K2, ssk, knit to last 4 sts, k2tog, k2—52 (54, 56, 56, 58) sts.
Next Row: Purl.
Repeat Decrease Row—50 (52, 54, 54, 56) sts.
Repeat last 2 rows 14 (15, 15, 13, 14) more times—22 (22, 24, 28, 28) sts.
Work even in St st for 3 rows.
Repeat Decrease Row—20 (20, 22, 26, 26) sts.
Repeat last 4 rows 3 (3, 4, 6, 6) more times—14 sts.
Bind off on Right Side.

FINISHING

Sew sleeves to front and back along raglan edges. Sew side and sleeve seams.

Turtleneck

With Right Side facing and circular needle, beginning at back left raglan seam, pick up and k12 sts evenly across top of left sleeve, 34 sts across front neck, 12 sts across top of right sleeve, and 34 sts across back neck—92 sts. Place marker for beginning of round.
Work in rounds in 2x2 Rib until turtleneck measures 5".
Bind off in rib.
Weave in ends.

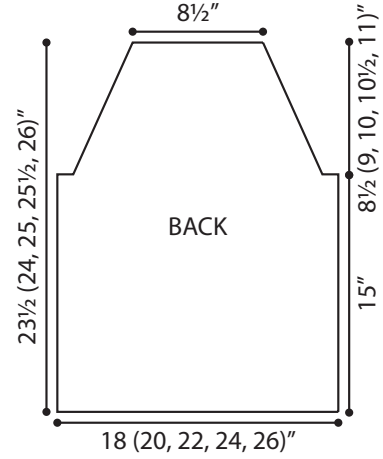
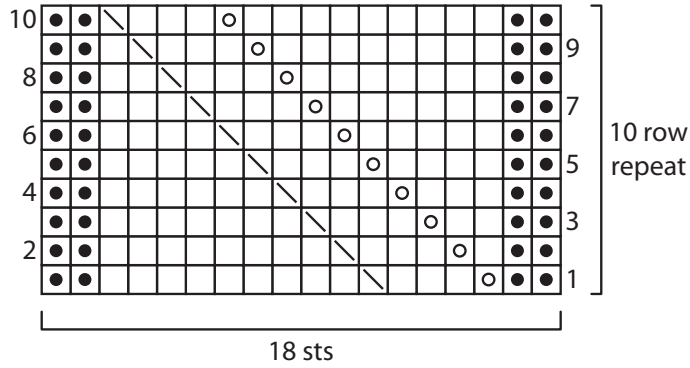


RED HEART® Boutique™ “Midnight™”
Art. E786, Available in 2.5 oz (70g), 153 yd (140m) balls.

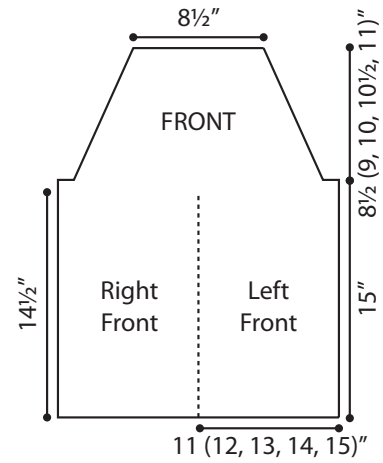
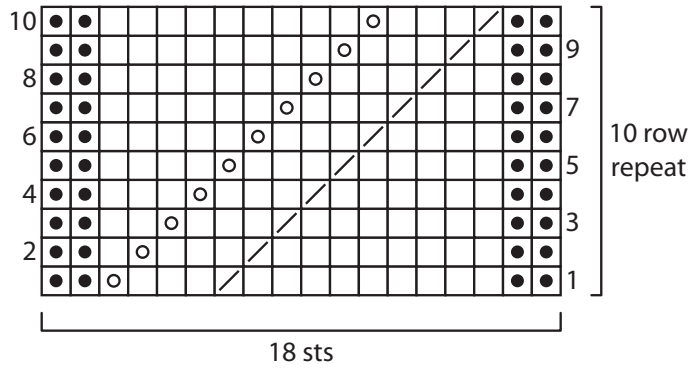
ABBREVIATIONS: k = knit; k2tog = knit next 2 sts together; p = purl; p2tog = purl next 2 sts together; st(s) = stitch(es); tbl = through back loop(s); yo = yarn over; * = repeat whatever follows the * as indicated.



Cable Lace Right



Cable Lace Left



- k on RS, p on WS
- p on RS, k on WS
- yarn over
- ▤ k2tog on RS, p2tog on WS
- ▥ skip on RS, p2tog tbl on WS

