



LW4309-K



knitting

Designed by Edie Eckman

What you will need:

RED HEART® Soft®: 1 ball 9388 Wheat

Susan Bates® Knitting Needles: 5 mm [US 8]

Cable needle, yarn needle

GAUGE: 19 sts = 4" (10 cm); 23 rows = 4" (10 cm) in Stockinette st (knit on right side, purl on wrong side). **CHECK YOUR GAUGE.** Use any size needles to obtain the gauge.

Buy Yarn



RED HEART® Soft®, Art. E728 available in 5 oz (141 g), 256 yd (234 m) balls



Lattice Cables Square

For Knit Your Cables Afghan

Use this square for making the one-color Knit Your Cables Afghan. Follow our blog by searching LW4309 for hints on knitting each square of this afghan. Then, if you feel creative, use the stitch pattern for your own unique knit project.

Square measures 10" (25.5 cm) square

Special Abbreviations

2/2 LC (2 over 2 Left Cross): Slip next 2 sts to cable needle and hold in front, k2, k2 from cable needle.

2/2 RC (2 over 2 Right Cross): Slip next 2 sts to cable needle and hold in back, k2, k2 from cable needle.

2/2 LPC (2 over 2 Left Purl Cross): Slip next 2 sts to cable needle and hold in front, p2, k2 from cable needle.

2/2 RPC (2 over 2 Right Purl Cross): Slip next 2 sts to cable needle and hold in back, k2, p2 from cable needle.

SQUARE K

Long-tail cast on 68 sts.

Rows 1 and 3 (wrong side): K1, *k2, p4; repeat from * to last st, k1.

Row 2: P1, *2/2 LC, p2; repeat from * to last st, p1.

Row 4: P3, *k2, 2/2 RPC; repeat from * to last 5 sts, k4, p1.

Rows 5 and 7: K1, *p4, k2; repeat from * to last st, k1.

Row 6: P1, *p2, 2/2 RC; repeat from * to last st, p1.

Row 8: P1, k4, *2/2 LPC, k2; repeat from * to last 3 sts, p3.

Repeat Rows 1-8 seven more times. Repeat Row 1 once more. Bind off in pattern on right side.

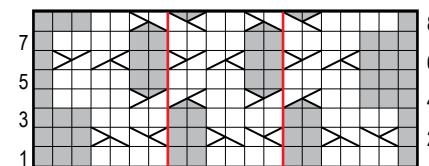
Finishing

Block piece to approximately 10" (25.5 cm) square.

Weave in ends.

ABBREVIATIONS

k = knit; p = purl; st(s) = stitch(es); * = repeat whatever follows the * as indicated.



6-st repeat

KEY

- k on RS, p on WS
- p on RS, k on WS
- k tbl
- 1/1 RC
- 1/1 LC
- 2/1 LPC
- 2/1 RPC
- 1/2 LPC
- 1/2 RPC
- 2/2 RC
- 2/2 LC
- 2/2 RPC
- 2/2 LPC
- 3/1 LPC
- 3/1 RPC
- 3/3 RC
- 3/3 LC



Please Note: Print this pattern using Landscape Orientation.

Find more ideas & inspiration: www.redheart.com

©2014 Coats & Clark

RedHeart.com