



LW4387



EASY

crochet

Designed by Jessie Rayot

What you will need:

RED HEART® Super Saver®: 1 skein each of 316 Soft White A, 321 Gold B, 624 Tea Leaf C, 389 Hunter Green D, and 376 Burgundy E

Note: Yarn quantities are sufficient to make both Pillow Covers.

Susan Bates® Crochet Hook: 5.5mm [US I-9]

Yarn needle, two 16 x 16" (40.5 x 40.5 cm) pillow forms

GAUGE: 1 ripple = 5½" (14 cm) measured from peak to peak; 7 rows = 4" (10 cm) in pattern. **CHECK YOUR GAUGE.** Use any size hook to obtain the gauge.

Buy Yarn



RED HEART® Super Saver®, Art. E300 available in solid color 7 oz (198 g), 364 yd (333 m); multicolor, heather and print 5 oz (141 g), 244 yd (223 m), flecks 5 oz (141g), 260 yds (238 m) skeins



Holiday Chevron Pillows

The ever popular rippling chevron design is the perfect way to spruce up your surroundings during the yuletide season. This easy pattern is fun to crochet in whatever colors you use for your holiday décor. For matching Holiday Chevron Throw, see pattern LW4388.

Pillow Cover fits a 16 x 16" (40.5 x 40.5 cm) pillow form

Special Stitch

dc2tog = [Yarn over, insert hook in next stitch, yarn over and pull up loop, yarn over, draw through 2 loops] 2 times, yarn over, draw through all 3 loops on hook.

Stripe Sequence #1

Work 1 row with A, 1 row with B, 1 row with A, 4 rows with C, 1 row with A, 1 row with B, 1 row with A, 6 rows with E, 1 row with A, 1 row with B, 1 row with A, 4 rows with D, 1 row with A, 1 row with B, 1 row with A.

Stripe Sequence #2

Work 4 rows with D, 4 rows with E, 3 rows with C, 1 row with A, 2 rows with B, 1 row with A, 3 rows with C, 4 rows with E, 4 rows D.

Notes

1. Each Pillow Cover is made in a single piece. The straight edges of the piece are sewn together to form a tube. The rippled edges at one end are then matched and sewn together. The pillow form is inserted and the rippled edges at the bottom matched and sewn together.
2. To change color, work last stitch of old color to last yarn over. Yarn over with new color and draw through all loops on hook to complete stitch. Proceed with new color. Fasten off old color.

PILLOW #1

With A, ch 99 loosely.

Row 1 (right side): Dc in 4th ch from hook (3 skipped ch count as first dc), dc in next 5 ch, [dc2tog] twice, dc in next 5 ch, *2 dc in each of next 2 ch, dc in next 5 ch, [dc2tog] twice, dc in next 5 ch; repeat from * to last ch, 2 dc in last ch, turn—6 ripples. Change to B.

Row 2: With B, ch 3 (counts as first dc here and throughout), dc in first dc, dc in next 5 dc, [dc2tog] twice, dc in next 5 dc, *2 dc in each of next 2 dc, dc in next 5 dc, [dc2tog] twice, dc in next 5 dc; repeat from * to turning ch, 2 dc in top of turning ch, turn. Change to A. Repeat Row 2 and continue to change color as in Stripe Sequence #1, until all 26 rows are worked. Fasten off.

PILLOW #2

Work same as Pillow #1, changing color as in Stripe Sequence #2.

FINISHING

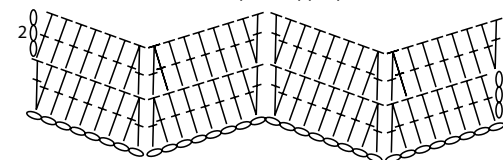
With matching color yarn, sew straight side edges of the piece together to form a tube. Flatten the tube, with seam at one side edge. Slide the seam over until the peaks on the top layer line up with the valleys of the lower layer. Sew the top rippled edge closed. Insert the pillow form. Sew the lower rippled edge closed. Weave in ends.

Tip: If you want the Cover to be removable, sew the straight edges together for only about 1" (2.5 cm) at beginning and at end of edge, leaving about 14" (35.5 cm) unsewn in the middle. Sew in a 14" (35.5 cm) zipper.

ABBREVIATIONS

A, B, C, D, and E = Color A, B, C, D, and E; ch = chain; dc = double crochet; st(s) = stitch (es); [] = work directions in brackets the number of times specified; * = repeat whatever follows the * as indicated.

reduced sample of ripple pattern



Please Note: Print this pattern using Landscape Orientation.

Find more ideas & inspiration: www.redheart.com

©2014 Coats & Clark

RedHeart.com