



LW4581



EASY

knitting

Designed by KJ Hay

What you will need:

RED HEART® Boutique Unforgettable®: 1 (1, 2, 3) balls 3950 Petunia

Susan Bates® Knitting Needles: 4.5mm [US 7]

Stitch markers, stitch holder, 4 (4, 6, 6) ¼ - ¾ (6-10mm) buttons, yarn needle.

GAUGE: 18 sts = 4" (10 cm); 24 rows = 4" (10 cm) in pattern. CHECK YOUR GAUGE. Use any size needles to obtain the gauge.

Buy Yarn



RED HEART® Boutique Unforgettable®, Art. E793 available in 3.5oz (100 g), 280 yd (256 m) balls



Paw Print Dog Sweater

Keep your best furry friend warm with this stylish shaded sweater. If you look closely at the pretty lace design you'll see that it is made up of clever puppy paw prints!

Directions are for size X-Small; changes for sizes Small, Medium, and Large are in parentheses.

Finished Chest: 15 (19, 23, 27)" [38 (48.5, 58.5, 68.5) cm]

Finished Length: 11 (14, 18, 21½)" [28 (35.5, 45.5, 54.5) cm], not including collar.

Note

Sweater is worked in two pieces, Back and Chest, each beginning at lower edge. Collar is worked across top of both pieces.

Special Stitch

ssk = (slip, slip, knit) Slip next 2 stitches, one at a time as if to knit, to right needle, insert point of left needle through front of sts, knit these sts together through back loop.

Pattern Stitches

Puppy Paw Lace

(begins over 7 sts, increases to 9 sts and decreases back to 7 sts)

Row 1 (right side): K2, k2tog, yo, k3.

Row 2: P3, (p1, yo, p1) in next st, p3—9 sts.

Row 3: K2tog, yo, k2tog, k1, ssk, yo, ssk—7 sts.

Row 4: Purl.

Row 5: K1, k2tog, yo, k1, yo, ssk, k1.

Row 6: Purl.

Repeat Rows 1–6 for Puppy Paw Lace.

2x2 Rib (multiple of 4 sts)

Row 1 (RS): *K2, p2; repeat from * to end of row.

Repeat Row 1 for 2x2 Rib.

BACK

Cast on 44 (58, 72, 86) sts.

Work in Garter st (knit every row) until piece measures about 1" (2.5 cm) from beginning.

Row 1 (right side): K5, place marker (pm), k3, [work Row 1 of Puppy Paw Lace, k7] 2 (3, 4, 5) times, k3, pm, k5.

Row 2: K5, slip marker (sm), p3, [p7, work Row 2 of Puppy Paw Lace] 2 (3, 4, 5) times, p3, sm, k5.

Row 3: K5, sm, k3, [work next row of Puppy Paw Lace, k7] 2 (3, 4, 5) times, k3, sm, k5.

Row 4: K5, sm, p3, [p7, work next row of Puppy Paw Lace] 2 (3, 4, 5) times, p3, sm, k5.

Rows 5 and 6: Repeat last 2 rows working next row of Puppy Paw Lace in each row.

Row 7: K5, sm, k3, [k7, work Row 1 of Puppy Paw Lace] 2 (3, 4, 5) times, k3, pm, k5.

Row 8: K5, sm, p3, [work Row 2 of Puppy Paw Lace, p7] 2 (3, 4, 5) times, p3, sm, k5.

Row 9: K5, sm, k3, [k7, work next row of Puppy Paw Lace] 2 (3, 4, 5) times, k3, sm, k5.

Row 10: K5, sm, p3, [work next row of Puppy Paw Lace, p7] 2 (3, 4, 5) times, p3, sm, k5.

Rows 11 and 12: Repeat last 2 rows working next row of Puppy Paw Lace in each row.

Work in pattern as established until piece measures 4½ (5½, 5½, 7)" [11.5 (14, 14, 18) cm] from beginning; end with a **wrong** side row.

Buttonhole Row (right side): K1, k2tog, yo, k2, sm, k3, [work **next** row of Puppy Paw Lace, k7] 2 (3, 4, 5) times, k3, sm, k2, yo, ssk, k1.

* Work in pattern as established until piece measures 2½ (3, 3, 3½)" [6.5 (7.5, 7.5, 9) cm] from last Buttonhole Row.

Repeat Buttonhole Row.

Repeat from * 0 (0, 2, 2) more times.

Continue in pattern as established until piece measures 11 (13½, 17½, 20)" [28 (34.5, 44.5, 51) cm] from beginning; end with a Row 6 or a Row 12. Place sts on holder.

Continued...



Please Note: Print this pattern using Landscape Orientation.

Find more ideas & inspiration: www.redheart.com

©2014 Coats & Clark

RedHeart.com

Page 1 of 2

CHEST

Cast on 22 (28, 32, 36) sts.

Work in Garter st (knit every row) until piece measures about 1" (2.5 cm) from beginning.

Row 1 (right side): K5, pm, knit to last 5 sts, pm, k5.

Row 2: K5, sm, purl to marker, sm, k5.

Work even in pattern as established until piece measures 5 (6, 9½, 11)" [12.5 (15, 24, 28) cm] from beginning; end with a wrong side row.

Shape Front

Row 1 (right side): K5, sm, ssk, knit to 2 sts before marker, k2tog, sm, k5—20 (26, 30, 34) sts.

Row 2: K5, sm, purl to marker, sm, k5.

Repeat last 2 rows 4 (7, 9, 11) times—12 sts. Remove markers.

Next Row: K4, ssk, k2tog, k4—10 sts.

Next Row (wrong side): Knit.

COLLAR

Row 1 (right side): Cast on 6 (8, 6, 8) sts for buttonhole tab. Beginning by working over sts just cast-on, work in 2x2 Rib across chest sts, continue in 2x2 Rib across Back sts on holder—60 (76, 88, 104) sts.

Work in 2x2 Rib for 2 more rows.

Buttonhole Row (wrong side): Work in 2x2 Rib to last 6 sts, p2, k2tog, yo, p2.

Work in 2x2 Rib for 8 rows.

Buttonhole Row (right side): K2, p2tog through back loops, yo, work in 2x2 Rib to end of row.

Work in 2x2 Rib for 3 rows.

Bind off in pattern.

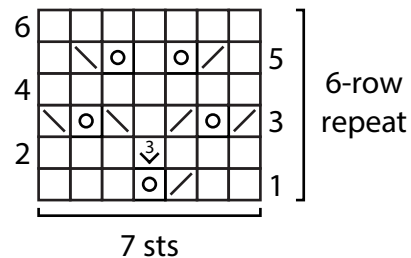
FINISHING

Fold Collar in half lengthwise, taking bind-off edge to wrong side of piece and matching up buttonholes. With yarn needle, sew bind-off edge to wrong side of first row of Collar.

Sew around the buttonhole edges to join and strengthen them. Sew Chest to Back beginning at Collar and sewing until the desired amount of space for leg remains between end of seam and first buttonhole. Sew buttons to Chest opposite buttonholes on Back. Weave in all loose ends.

ABBREVIATIONS

k = knit; **k2tog** = knit next 2 sts together; **p** = purl; **p2tog** = purl next 2 sts together; **pm** = place marker; **sm** = slip marker; **st(s)** = stitch(es); **yo** = yarn over; **()** = work directions in parentheses into same st; **[]** = work directions in brackets the number of times specified; * = repeat whatever follows the * as indicated.

Puppy Paw Lace

□ k on RS, p on WS

◐ p on RS, k on WS

◑ ssk

◒ k2tog

◓ (p1, yo, p1) in same st

◔ yarn over



Please Note: Print this pattern using Landscape Orientation.

Find more ideas & inspiration: www.redheart.com

©2014 Coats & Clark

RedHeart.com

Page 2 of 2