



chic sheep
by Marly Bird™

Abstractly Chic Shawl Crochet-Along

This fun shawl is as free-spirited as you desire! Do it in highly contrasting colors as we show, or use a more ombré or neutral palette. You'll have a chance to crochet interesting stitches as you learn along with Marly Bird.



LW6422

©2018 Coats & Clark



crochet



Designed by Marly Bird

What you will need:

RED HEART® Chic Sheep™: 3 balls of 5693 Poolside **A**, 1 ball each of 5254 Sunset **B** and 5311 Lace **C**

Susan Bates® Crochet Hook: 5mm [US H-8]

Yarn needle, 6" piece of cardboard (optional)

GAUGE: 5 v-sts = 4.5" (11.5 cm); 9 rows = 4.25" (11 cm) in V-st stitch pattern. 16 sts = 4" (10 cm); 17 rows = 4" (10 cm) in cable stitch pattern. **CHECK YOUR GAUGE. Use any size hook to obtain the gauge.**

BUY YARN



RED HEART® Chic Sheep by Marly Bird™, Art. R170 100% Merino Wool available 3.5 oz (100 g), 186 yd (170 m) balls

Shawl measures: 62" [157.5 cm] in wingspan, 21" [53.5 cm] in height.

Special Stitches

V-st: (dc, ch 1, dc) in stitch or space indicated

Front Post Double Crochet (fpdc): Yarn over hook, insert hook from the front around post of stitch indicated, yarn over and pull up a loop, [yarn over and draw through 2 loops on hook] twice.

Back Post Double Crochet (bpdc): Yarn over hook, insert hook from the back around post of stitch indicated, yarn over and pull up a loop, [yarn over and draw through 2 loops on hook] twice.

Single Crochet 2 Together (sc2tog): [Insert hook in next indicated stitch and pull up a loop] twice, yarn over and draw through all 3 loops on hook.

Slip Stitch Embroidery: Hold working yarn on backside of fabric, insert hook from front of fabric, yarn over hook on backside of fabric, pull loop through fabric and loop on the hook.

Double Crochet 2 Together (dc2tog): *Yarn over hook, insert hook in next indicated stitch and pull up a loop, yarn over and draw through 2 loops on hook; repeat from * once more, yarn over and draw through all 3 loops on hook.

PATTERN Right Section

Chain 4 with **B**.

Foundation Row (WS): 4 dc in 4th ch from hook (skipped 3 chains counts as dc). Turn - 5 dc.

Row 1: Ch 3 (counts as a dc throughout), 2 dc in first dc, dc in each dc to tch, dc in top of tch. Turn - 2 sts increased.

Row 2: Ch 3, dc in next dc, dc in each dc to tch, 3 dc in top of tch, turn--2 sts increased.

Rows 3-5: Repeat Rows 1 and 2 once, then Row 1 one more time. - 15 dc.

Lower V-st section

Row 6: Ch 3, *skip 1 dc, V-st in next dc; repeat from * to last 2 sts, skip next dc, 3 dc in top of tch. Turn - 6 V-sts, 1 dc to start, 3 dc at increase edge.

Row 7: Ch 3, 2 dc in first dc, *V-st in space between next V-st; repeat from * to tch, V-st in space between last V-st and tch. Turn - 7 V-sts, 3 dc at increase edge.

Row 8: Ch 3, *V-st in space between next two V-sts; repeat from * to last 3 sts, 3 dc in top of tch. Turn - 7 V-sts, 1 dc to start, 3 dc at increase edge.

Rows 9-17: Repeat Rows 7 and 8 four times, then Row 7 once. - 12 V-sts, 3 dc at increase edge.

Post Stitch Section

(Note: Crochet 6 rows in **B**, then 6 rows in **C**, then 6 rows in **A**)

Row 18: Ch 3, *dc in next ch-1 space, dc in next 2 dc; repeat from * across to last 2 sts, dc in next dc, 3 dc in top of tch. Turn - 41 dc.

Row 19: Ch 3, 2 dc in first dc, *fpdc in next dc, bpdc in next dc; repeat from * to last 2 sts, fpdc in last dc, dc in top of tch. Turn - 2 sts increased.

Row 20: Ch 3, *fpdc in next dc, bpdc in next dc; repeat from * to last 2 sts, fpdc in last dc, 3 dc in top of tch. Turn - 2 sts increased.

Rows 21-23: Repeat Rows 19-20 once, and Row 19 once more. Fasten off **B** - 51 sts.

Rows 24-29: Join **C**, repeat Row 20, and Rows 19-20 twice, then Row 19 once more. Fasten off **C** - 63 sts.

continued...





Rows 30-35: Join **A**, repeat Row 20, and Rows 19-20 twice, then Row 19 once more - 75 sts.

Upper V-st section

Row 36: Ch 3, skip first 2 dc, *V-st in next dc, skip 2 dc; repeat from * to tch, 3 dc in top of tch. Turn - 24 V-sts, 1 dc to start, 3 dc at increase edge.

Row 37: Ch 3, 2 dc in first dc, *V-st in space between next V-st; repeat from * to tch, V-st in space between last V-st and tch Turn - 25 V-sts, 3 dc at increase edge.

Row 38: Ch 3, *V-st in space between next two v-sts; repeat from * to last 3 sts, 3 dc in top of tch. Turn - 25 V-sts, 1 dc to start, 3 dc at increase edge.

Rows 39-49: Repeat Rows 37-38 five times, and Row 37 once more - 31 V-sts.

Cable Section

With **A**, turn 90 degrees, work along the straightedge side of the shawl over the row ends, sc 90 sts evenly.

Row 1: Ch 25, turn, sc in 2nd ch from hook and in each ch across to last ch, sc2tog over last ch and first sc on edge (joins cable section to right section), slip st in next sc on edge (counts as 1 turning ch). Turn.

Row 2: *Sc in next 2 sc, ch 1, skip 1 sc, sc in next 2 sc, ch 1, skip 1 sc, sc in next 2 sc; repeat from * across to end. Turn - 24 sts.

Row 3: Ch 1, *sc in next 2 sc, ch 1, skip ch-1 space, sc in next 2 sc, ch 1, skip ch-1 space**, sc in next 2 sc; repeat from * across ending at **, sc in next sc, sc2tog over last sc and next sc on edge, slip st to next sc on edge. Turn.

Row 4: *Sc in next 2 sc, ch 1, skip ch-1 space, sc in next 2 sc, ch 1, skip ch-1 space, sc in next 2 sc; repeat from * across to end. Turn.

Row 5: Ch 1, *sc in next 2 sc, sc in ch-1 space, ch 2, skip 2 sc, sc in ch-1 space**, sc in next 2 sc; repeat from * across ending at **, sc in next sc, sc2tog over last sc and next sc on edge, slip st to next sc on edge. Turn.

Row 6: Sc in first 3 sc, *ch 2, skip ch-2 space, sc in next 6 sc; repeat from * across to last 5 sts, ch 2, skip ch-2 space, sc in last 3 sc. Turn.

Row 7: Ch 1, *sc in next 2 sc, ch 1, skip 1 sc, 2 sc in ch-2 space, ch 1, skip 1 sc**, sc in next 2 sc; repeat from * across ending at **, sc in next sc, sc2tog over last sc and next sc on edge, slip st to next sc on edge. Turn.

Row 8: Repeat Row 4 of cable section

Row 9-10: Repeat Rows 3-4 of cable section

Rows 11-82: Repeat Rows 3-10 of cable section

Rows 83-89: Repeat Rows 3-9 of cable section

Row 90: Sc in each sc and ch-1 space across.

Left Section

With **A**, turn 90 degrees, work along the side of the shawl over the row ends, sc 88 sts evenly.

Row 1: Ch 4 (counts as dc, and ch 1-space of first V-st), dc in first sc, *skip 2 sc, V-st in next sc; repeat from * across to end. Turn - 30 V-sts.

Row 2: Ch 3, *V-st in space between next 2 V-sts; repeat from * to last 2 V-sts, dc in space between last 2 V-sts, ch 1, dc2tog over same sp and 3rd ch of tch. Turn - 29 V-sts (1 decrease V-st).

Row 3: Ch 3, *V-st in space between next 2 V-sts; repeat from * to tch, V-st in 3rd ch of tch. Turn - 29 V-sts

Rows 4-6: Repeat Rows 2-3 once, Repeat Row 2 once more. Fasten off **A** - 27 V-sts.

Rows 7-12: Join **B**, Repeat Row 3 once, Repeat Rows 2-3 twice, Repeat Row 2 once more, Fasten off **B** - 24 V-sts.

Rows 13-18: Join **C**, Repeat Row 3 once, Repeat Rows 2-3 twice, Repeat Row 2 once more, Fasten off **C** - 21 V-sts.

Rows 19-27: Join **A**, Repeat Row 3 once, Repeat Rows 2-3 4 times, Fasten off **A** - 17 V-sts.

Rows 28-33: Join **C**, Repeat Rows 2-3 3 times. Fasten off **C** - 14 V-sts.

Rows 34-42: Join **B**, Repeat Rows 2-3 4 times, Repeat Row 2 once more, Fasten off **B** - 9 V-sts.

Rows 43-59: Join **A**, Repeat Row 3 once, Repeat Rows 2-3 8 times. Fasten off **A** - 1 V-st.

FINISHING

Weave in all loose ends. Pin shawl to schematic size. Spray with water, allow to dry.

EDGING

With RS facing
Join **A** to edge of shawl with a slip stitch.

Round 1: Ch 1, *sc evenly across shawl to corner, 3 sc in corner; repeat from * around, slip st to first sc, do not turn.

Round 2: Ch 1, *sc in each sc to corner, 3 sc in corner; repeat from * around, slip st to first sc. Fasten off.

Cable Embroidery

Join **C** to Cable Section at Row 2 in first ch-1 space. Using chain spaces as a guide, slip stitch embroider up each

ch-space. Fasten off **C**. Repeat with a new strand of yarn for each line of chain spaces. See stitch diagram for location of slip stitches in chain spaces. Follow the blue dots first then the pink dots in the stitch diagram for each strand of yarn.

If you want to make it truly cable like, work the slip stitches of the pink under the slip stitch of the blue every other time the two cross.

Tassels

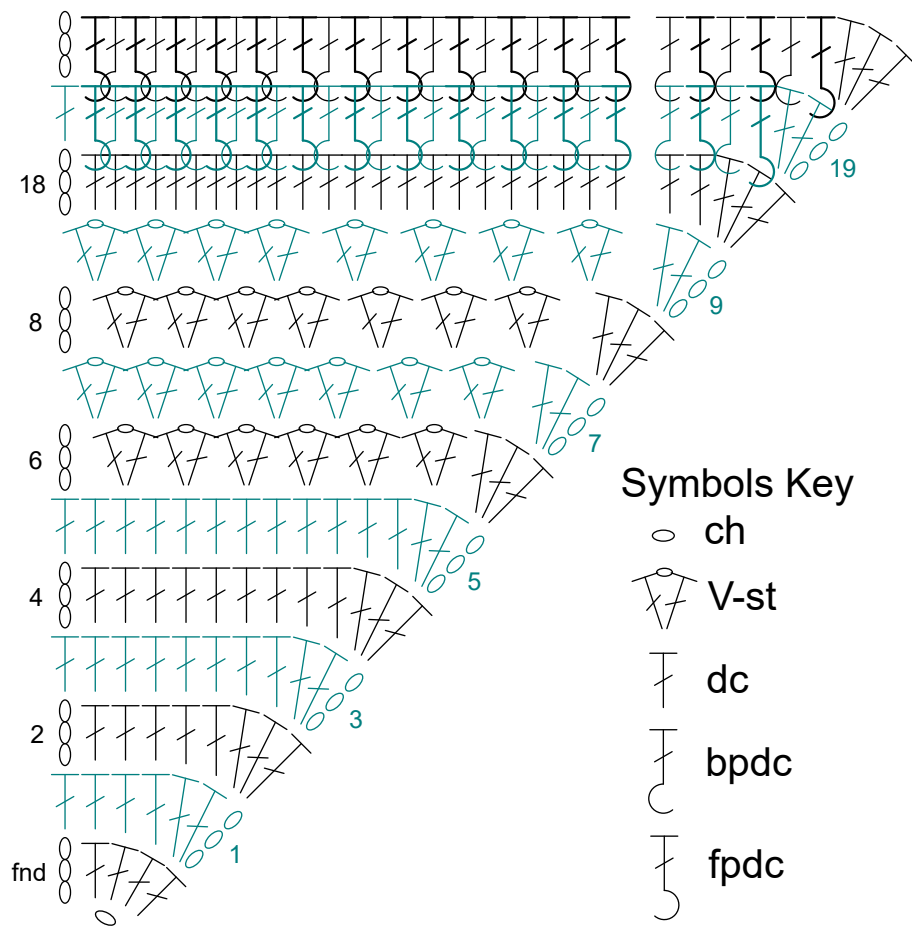
Cut 2 pieces of yarn (note: this can be any color you choose and will be the yarn that is used to attach the tassel to the shawl and to wrap around the tassel), 12" (30 cm) each, put aside. Wrap yarn around 6" piece of cardboard 65 times (or for desired amount), cut on one side creating 1 bundle of 65 strands. Place bundle evenly between one 12" (30 cm) piece of yarn, tie bundle into place (assure strands are even). Fold bundle so that strands are even, tie second 12" (30 cm) piece of yarn around bundle, 1" (2.5 cm) below knot. Trim bundle ends to make even. Make 1 more tassel in similar manner. Sew tassels to corners of shawl.

ABBREVIATIONS

ch = chain; **st(s)** = stitch(es); **sc** = single crochet; **dc** = double crochet; **tch** = turning chain; **RS** = right side; **WS** = wrong side; **()** = work directions in parentheses in same st; **[]** = work directions in brackets the number of times specified; * = repeat whatever follows the * as indicated.

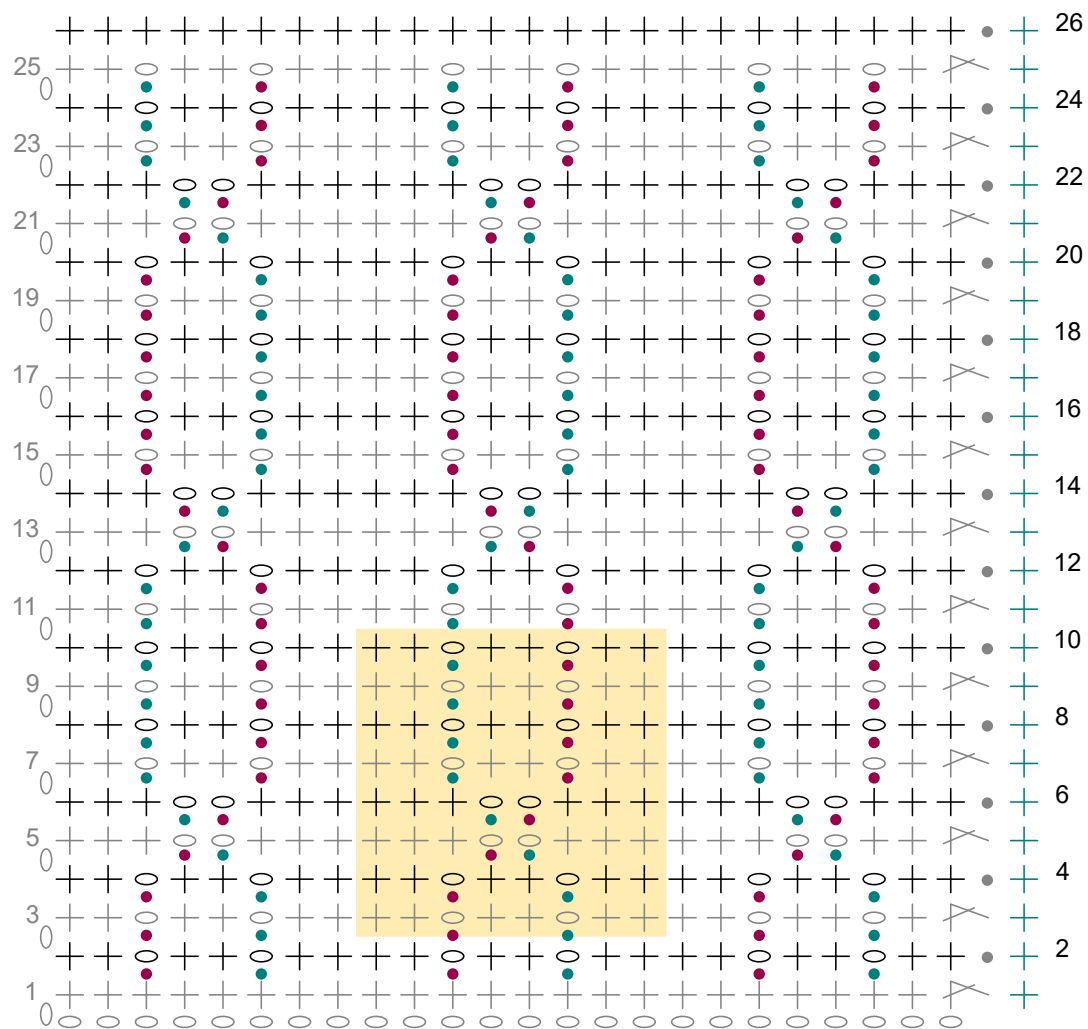
See next 3 pages for charts and alternate photos





Right Section Stitch Diagram





Symbols Key

- O chain
- slip stitch
- + single crochet
- ⋈ sc2tog
- stitch pattern repeat

Cable Section Stitch Pattern



